

A stylized painting of a woman with dark hair, wearing a red dress, is shown in profile, painting a geometric structure on a blue wall. The structure consists of several thin, light-colored lines forming a triangular shape with horizontal crossbars. The woman's hands are painted in a bright orange-red color. In the foreground, there is a table with a glass of water and a dark rectangular object. The background is a solid blue color with some geometric shapes in brown and pink.

CHRISTIE'S

MODERN  
AMERICAN ART

NEW YORK | 18 APRIL 2024









# MODERN AMERICAN ART

## AUCTION

Thursday 18 April at 10am (Lots 1-105)

20 Rockefeller Plaza  
New York, NY 10020

## VIEWING

|           |          |                    |
|-----------|----------|--------------------|
| Friday    | 12 April | 10.00 am - 5.00 pm |
| Saturday  | 13 April | 10.00 am - 5.00 pm |
| Sunday    | 14 April | 1.00 pm - 5.00 pm  |
| Monday    | 15 April | 10.00 am - 5.00 pm |
| Tuesday   | 16 April | 10.00 am - 5.00 pm |
| Wednesday | 17 April | 10.00 am - 5.00 pm |

## AUCTION CODE AND NUMBER

In sending absentee bids or making enquiries, this sale should be referred to as  
**GLORY-2174**

## ABSENTEE AND TELEPHONE BIDS

Tel: +1 212 636 2437  
Email: [BidsUS@christies.com](mailto:BidsUS@christies.com)

## CONTACT

Tylee Abbott  
+1 212 707 5925  
[TAbbott@christies.com](mailto:TAbbott@christies.com)

Paige Kestenman  
+1 212 636 2139  
[PKestenman@christies.com](mailto:PKestenman@christies.com)

FRONT COVER  
Lot 18 (detail)  
INSIDE FRONT COVER  
Lot 8  
OPPOSITE  
Lot 22  
PAGE 56  
LOT 6  
INSIDE BACK COVER  
Lot 12  
BACK COVER  
Lot 21



Please scan for complete auction information

# CHRISTIE'S





PROPERTY FROM A NEW ENGLAND COLLECTION

1

IDA TEN EYCK O'KEEFFE (1889-1961)  
*Flowers (Gardenias in a Pitcher)*

signed and dated 'Ida Ten Eyck O'Keeffe/1932' (on the reverse)  
oil on canvas  
8 x 7 in. (20.3 x 17.8 cm.)  
Painted in 1932.  
\$25,000-35,000



2

CHARLES SHEELER (1883-1965)  
*Zinnias*

signed and dated 'Sheeler 1918' (lower right)  
gouache and pencil on paper  
15 x 10<sup>1</sup>/<sub>8</sub> in. (38.1 x 25.7 cm.)  
Executed in 1918.  
\$60,000-80,000



PROPERTY FROM THE COLLECTION OF THE SOLOMON-KEMPLER FAMILY

3

FLORINE STETTMEYER (1871-1944)  
*Tulips Under a Canopy*

signed with initials in monogram 'FS' (lower right)  
oil on canvas  
40 x 32 in. (101.6 x 81.3 cm.)  
Painted circa 1925.  
\$200,000-300,000



PROPERTY FROM AN EXCEPTIONAL PRIVATE COLLECTION

4

GEORGIA O'KEEFFE (1887-1986)

*Blue Morning Glory*

signed with initials 'OK', dated '34' and inscribed with title  
(on the original backing)

oil on canvas

7 x 7 in. (17.8 x 17.8 cm.)

Painted in 1934.

\$700,000-1,000,000

“Her celebration of flowers was an expression of her feeling for the world around her...ravishingly lovely, silent, breathtaking, and surprising.”

Roxana Robinson







5  
**CHARLES EPHRAIM BURCHFIELD** (1893-1967)  
*Queen Anne's Lace*  
 signed with initials in monogram and dated 'CEB/1946' (lower left)—signed and dated again and inscribed with title (on the reverse)  
 watercolor, gouache and chalk on paper laid down on paperboard  
 31½ x 25¾ in. (80 x 64.5 cm.)  
 Executed in 1946.  
 \$120,000-180,000



6  
**CHARLES EPHRAIM BURCHFIELD** (1893-1967)  
*Retreat of Winter*  
 signed with initials in monogram and dated 'CEB/1950-64' (lower left)—dated again and inscribed with title and 'original sketch "Song of the Brook" -1950' (on the reverse)  
 watercolor on joined paper laid down on board  
 40 x 60 in. (101.6 x 152.4 cm.)  
 Executed in 1950-64.  
 \$400,000-600,000

7  
**THOMAS HART BENTON** (1889-1975)  
*Paint Mill Brook, Chilmark, Massachusetts*  
 signed and dated 'Benton '69' (lower left)  
 watercolor and pencil on paper  
 image, 20½ x 14¼ in. (52.1 x 36.2 cm.);  
 sheet, 24 x 18¾ in. (61 x 46 cm.)  
 Executed in 1969.  
 \$70,000-100,000





THE COLLECTION OF LOIS AND PHILIP MACHT

**8**

**THOMAS HART BENTON (1889-1975)**

*White Horse*

signed and dated 'Benton '55' and inscribed with title  
(on the reverse)

oil on canvas

22 x 30 in. (55.9 x 76.2 cm.)

Painted in 1955.

\$1,500,000-2,500,000

“Benton began to embrace the West as a place of harsh,  
breathtaking beauty and personal regeneration...”

Austen Barron Bailly







**9**  
**ROCKWELL KENT** (1882-1971)  
*Tree Tops and Mountain Peaks*  
signed 'Rockwell Kent' (lower right)  
oil on canvas  
28 x 34¼ in. (71.1 x 87 cm.)  
Painted circa 1950s.  
\$100,000-150,000



**10**  
**WOLF KAHN** (1927-2020)  
*Adriatic*  
signed twice 'W Kahn' (lower left)—dated '1996';  
numbered '94' and inscribed with title (on the  
stretcher)—dated and numbered again (on the  
reverse)  
oil on canvas  
26 x 38 in. (66 x 96.5 cm.)  
Painted in 1996.  
\$30,000-50,000



THE COLLECTION OF LOIS AND PHILIP MACHT

**11**  
**FAIRFIELD PORTER** (1907-1975)  
*White Boats*  
signed and dated 'Fairfield Porter 61' (lower  
right)—signed and dated again and inscribed  
with title (on the stretcher)  
oil on canvas  
30 x 44⅞ in. (76.2 x 114 cm.)  
Painted in 1961.  
\$250,000-350,000



**12**  
**FAIRFIELD PORTER** (1907-1975)  
*Keelin Before the Reflected View No. 2*  
signed and dated 'Fairfield Porter '72' (lower center)—signed  
and dated again and inscribed with title (on the stretcher)  
oil on canvas  
60 x 62 in. (152.4 x 157.5 cm.)  
Painted in 1972.  
\$500,000-700,000



13

MILTON AVERY (1885-1965)

*Female Painter*

signed and dated 'Milton Avery 1945' (lower left)

oil on canvas

32 x 40 in. (81.3 x 101.6 cm.)

Painted in 1945.

\$1,500,000-2,500,000

“What was Avery’s repertoire? His living room, Central Park, his wife Sally, his daughter March...his friends and whatever world strayed through his studio: a domestic, unheroic cast. But from these there have been fashioned great canvases, that...have always a gripping lyricism.”

Mark Rothko







14

MILTON AVERY (1885-1965)  
*Mother and Child*

signed and dated 'Milton Avery 1943' (lower center)  
oil on canvas  
44 x 32 in. (111.8 x 81.3 cm.)  
Painted in 1943.  
\$300,000-500,000

A FASHIONABLE LIFE: THE COLLECTION OF  
AN ELEGANT LADY

15

MILTON AVERY (1885-1965)  
*Goat Wading*

signed and dated 'Milton Avery 1962'  
(center left)  
oil on canvasboard  
24 x 36 in. (61 x 91.4 cm.)  
Painted in 1962.  
\$120,000-180,000



16

MILTON AVERY (1885-1965)  
*Harbor Gulls*

signed and dated 'Milton/Avery 1948'  
(lower right)  
gouache and watercolor on paper  
22½ x 30½ in. (57.2 x 77.5 cm.)  
Executed in 1948.  
\$50,000-70,000







17

**JOHN MARIN** (1870-1953)  
*Blue Black Sea, Grey Sky and Ledges,  
Region Cape Split, Maine*

signed and dated 'Marin 37' (lower right)  
watercolor, gouache and charcoal on paper  
15 $\frac{1}{4}$  x 20 $\frac{7}{8}$  in. (39 x 53 cm.)  
Executed in 1937.

\$30,000-50,000



18

**JOHN MARIN** (1870-1953)  
*Two Little Boats and Grey Sea,  
Cape Split, Maine*

signed and dated 'Marin 37' (lower right)  
watercolor and charcoal on paper  
15 $\frac{1}{4}$  x 20 $\frac{7}{8}$  in. (38.7 x 53 cm.)  
Executed in 1937.

\$40,000-60,000



PROPERTY OF AN IMPORTANT PRIVATE  
AMERICAN COLLECTOR

19

**JOHN MARIN** (1870-1953)  
*Chocorua Along with Dead Trees,  
White Mountains, N.H.*

signed and dated 'Marin 26' (lower right)—  
inscribed with title and dated again (on the  
reverse)  
watercolor and charcoal on paper  
16 $\frac{3}{8}$  x 21 $\frac{1}{4}$  in. (41.6 x 55.2 cm.)  
Executed in 1926.

\$15,000-25,000



20

**EDWARD HOPPER** (1882-1967)  
*Oaks at Eastham*

signed 'Edward Hopper' (lower right)  
watercolor and pencil on paper  
image, 20 x 27 $\frac{1}{4}$  in. (50.8 x 70.5 cm.);  
sheet, 21 $\frac{1}{8}$  x 29 $\frac{1}{2}$  in. (55.6 x 74.9 cm.)  
Executed in 1936.

\$500,000-700,000



21

MAXFIELD PARRISH (1870-1966)

*Ottaquechee River*

signed and dated 'Maxfield Parrish/1947' (lower right)—  
signed and dated again and inscribed with title (on the  
reverse)

oil on masonite

23 x 18<sup>5</sup>/<sub>16</sub> in. (58.4 x 47.3 cm.)

Painted in 1947.

\$1,000,000-1,500,000

“Probably that which has a greater hold on me  
than any other quality is color.”

Maxfield Parrish







22

**MAXFIELD PARRISH (1870-1966)**  
*View at Val San Zibio, Near Battaglia*

signed with initials 'M·P' (lower left)—signed again and dated 'January of 1904.' (on a label affixed to the reverse)—signed again and inscribed 'Pool at Val San Zibio' (on another label affixed to the reverse)  
 oil on paper laid down on board  
 17 x 11½ in. (43.2 x 29.2 cm.)  
 Painted in 1904.

\$150,000-250,000



23

**GEORGE HUGHES (1907-1990)**  
*Refinishing an Heirloom*

signed 'Hughes' (on the can at lower left)  
 oil on canvasboard  
 image, 27 x 21¾ in. (68.6 x 55.2 cm.);  
 overall, 30 x 25 in. (76.2 x 63.5 cm.)

\$30,000-50,000

24

**KURT ARD (B. 1925)**  
*In the Dentist's Chair*

signed 'Kurt Ard.' (lower right)  
 tempera on paperboard  
 21¼ x 19½ in. (55.2 x 49.5 cm.)  
 Painted circa 1957.

\$20,000-30,000



25

**STEVEN DOHANOS (1907-1994)**  
*Frozen Laundry*

signed 'Stevan Dohanos' (lower left)  
 oil on masonite  
 43¾ x 33⅞ in. (111.1 x 86 cm.)

\$70,000-100,000







26

NORMAN ROCKWELL (1894-1978)  
*Portrait of John F. Kennedy*

signed 'Norman/Rockwell' (lower right)  
 oil on canvas  
 23 x 17¾ in. (58.4 x 45.1 cm.)  
 Painted in 1963.

\$400,000-600,000



PROPERTY FROM AN IMPORTANT ILLUSTRATION COLLECTION

27

DEAN CORNWELL (1892-1960)  
*"A Strange Sound Drifted Down to Kit from the  
 Top of the Range - A Man's Voice, Singing"*

signed with initials and dated 'DC/24' (lower right)  
 oil on canvas  
 36 x 30 in. (91.4 x 76.2 cm.)  
 Painted in 1924.

\$30,000-50,000

PROPERTY FROM AN IMPORTANT ILLUSTRATION COLLECTION

28

NEWELL CONVERS WYETH (1882-1945)  
*"I ax yer parding, Mister Phinn--/Jest drap that  
 whisky-skin"*

signed 'N.C. Wyeth!' (upper right)  
 oil on canvas  
 32 x 25 in. (81.3 x 63.5 cm.)  
 Painted in 1912.

\$300,000-500,000



29

NEWELL CONVERS WYETH (1882-1945)  
*"Don't let me fall, she begged..."*

signed 'N.C. Wyeth (upper left)  
 oil on canvas  
 40¼ x 30¼ in. (102.2 x 76.8 cm.)  
 Painted in 1921.

\$150,000-250,000







**30**  
**PAUL HOWARD MANSHIP** (1885-1966)  
*Owl*  
 inscribed 'P.M.' (on the underside)  
 bronze with brown patina  
 2 in. (5.1 cm.) high with a 3½ in. (7.6 cm.) bronze rod on a 1¼ in. (3.2 cm.) lapis base  
 \$30,000-50,000



**31**  
**PAUL HOWARD MANSHIP** (1885-1966)  
*Baboon*  
 inscribed 'P. MANSHIP' (along the base)  
 bronze with brown patina  
 11½ in. (29.2 cm.) high on a 1½ in. (3.8 cm.) high base  
 Modeled *circa* 1932.  
 \$60,000-80,000



**33**  
**CHARLES E. PRENDERGAST** (1863-1948)  
*Country Fair*  
 signed 'C Prendergast' (lower left)  
 mixed media on gessoed board  
 image, 12¼ x 16½ in. (31.1 x 41.9 cm.);  
 overall, 15¾ x 19 in. (40 x 48.3 cm.)  
 Executed *circa* 1936.  
 \$80,000-120,000



PROPERTY FROM THE COLLECTION OF THE SOLOMON-KEMPLER FAMILY

**34**  
**CHARLES DEMUTH** (1883-1935)  
*Juggler*  
 signed and dated 'C. Demuth -1916-' (lower left)  
 watercolor and pencil on paper  
 13 x 7¾ in. (33 x 19.7 cm.)  
 Executed in 1916.  
 \$40,000-60,000



**32**  
**GASTON LACHAISE** (1882-1935)  
*Sea Lion (Seal)* [LF 16/LF 222]  
 inscribed 'G. LACHAISE' and '©/1921' (on the base)—  
 inscribed 'ROMAN BRONZE WORKS N-Y-' (along the base)  
 bronze with dark brown patina  
 11½ in. (29.2 cm.) high  
 Modeled *circa* 1914-17; cast *circa* 1921-26.  
 \$40,000-60,000



PROPERTY FROM THE COLLECTION OF THE SOLOMON-KEMPLER FAMILY

**35**  
**FLORINE STETTHEIMER** (1871-1944)  
*Henry McBride on Winslow Homer*  
 mixed media and collage on paper with a printed reproduction  
 10½ x 8½ in. (26.7 x 21.6 cm.)  
 Executed *circa* 1924.  
 \$40,000-60,000



PROPERTY FROM A DISTINGUISHED PRIVATE COLLECTION

**36**  
**JACOB LAWRENCE** (1917-2000)  
*U.S.O. 'Show'*  
 signed, dated and inscribed 'Jacob Lawrence 1945/U.S.C.G.'  
 (lower right)—signed again and inscribed with title (on the reverse)  
 gouache and watercolor on paper  
 21½ x 29½ in. (54.6 x 74.9 cm.)  
 Executed in 1945.  
 \$100,000-150,000





PROPERTY FROM A DISTINGUISHED PRIVATE COLLECTION

•37

GEORGE LOVETT KINGSLAND MORRIS (1905-1975)  
*Untitled (Sophisticated Couple)*

signed 'Morris' (lower right)—signed again and dated '1946'  
(on the reverse)

oil on canvas  
18½ x 15½ in. (46 x 38.4 cm.)  
Painted in 1946.

\$8,000-12,000



PROPERTY OF AN IMPORTANT PRIVATE AMERICAN COLLECTOR

•38

WERNER DREWES (1899-1985)  
*Composition*

dated '40' with artist's device (lower right)—dated again  
with artist's device (on the reverse)

oil on canvas  
25 x 34¾ in. (63.5 x 88.3 cm.)  
Painted in 1940.

\$5,000-7,000



PROPERTY FROM THE COLLECTION OF SHIRLEY ROSS DAVIS

41

RALSTON CRAWFORD (1906-1978)  
*Boat and Grain Elevator*

signed 'Crawford' (lower center)

oil on canvas  
30 x 36 in. (76.2 x 91.4 cm.)  
Painted in 1942.

\$200,000-300,000



39

GEORGE LOVETT KINGSLAND MORRIS (1905-1975)  
*Indian Composition #8*

signed and dated 'Morris '40' (lower right)—signed again  
(on the reverse prior to lining)

oil on canvas  
60 x 54¼ in. (152.4 x 137.8 cm.)  
Painted in 1940.

\$50,000-70,000



40

JOHN HENRY BRADLEY STORRS (1885-1956)  
*Untitled*

signed with initials and dated 'J-S/3-26-36' (on the reverse)

oil on masonite  
43 x 42½ in. (109.2 x 108 cm.)  
Painted in 1936.

\$70,000-100,000





42

JOHN GRAHAM (1881-1961)

*Abstraction*

signed and dated 'Graham 31' (upper left)—signed again (on the stretcher)—signed again (on the reverse prior to lining)

oil on canvas  
15 x 18½ in. (38.1 x 46 cm.)  
Painted in 1931.

\$25,000-35,000



43

CHARLES GOELLER (1901-1955)

*The Blue Box*

signed 'Goeller' (lower right)  
oil on canvas  
29 x 24 in. (73.7 x 61 cm.)

Painted *circa* 1930.

\$12,000-18,000



46

KONRAD CRAMER (1888-1963)

*Rondout Bridge with Tree*

oil on board  
19¾ x 23¾ in. (50.2 x 60.3 cm.)  
Painted *circa* 1930.

\$3,000-5,000



47

CHARLES GOELLER (1901-1955)

*Road with Hills*

signed 'Goeller' (lower left)  
oil on canvas  
14⅞ x 11 in. (35.9 x 27.9 cm.)

\$5,000-7,000



44

EDMUND LEWANDOWSKI (1914-1998)

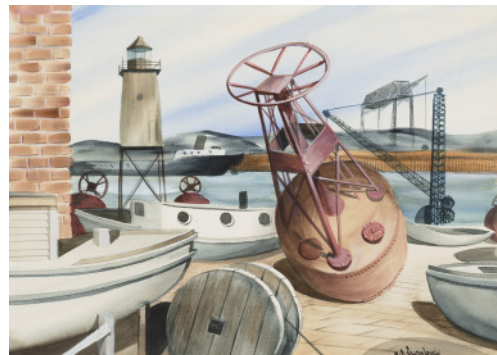
*White Stack*

signed and dated 'Lewandowski 1946 ©' (lower left)  
gouache on paperboard

image, 17 x 25¼ in. (43.2 x 64.1 cm.);  
overall, 21¼ x 28⅝ (55.2 x 72.7 cm.)

Executed in 1946.

\$10,000-15,000



45

EDMUND LEWANDOWSKI (1914-1998)

*Lighthouse Service Station*

signed 'E.D. Lewandowski' (lower right)—signed again (on the reverse)

watercolor, gouache and pencil on paperboard  
15½ x 21⅞ in. (39.4 x 55.6 cm.)

Executed *circa* 1937.

\$8,000-12,000



48

MARVIN CONE (1891-1964)

*White Barn No. 2*

signed 'Marvin/Cone' (lower right)  
oil on canvas

13 x 32 in. (33 x 81.3 cm.)  
Painted in 1948.

\$60,000-80,000





**49**  
**THOMAS HART BENTON** (1889-1975)  
*High Plains*  
 signed 'Benton' (lower left)  
 oil on panel  
 4½ x 6⅞ in. (11.4 x 16.2 cm.)  
 Painted in 1953.  
 \$100,000-150,000



**50**  
**THOMAS HART BENTON** (1889-1975)  
*The Arts of Life in America: Arts of the South—Study*  
 signed 'Benton' (lower right)  
 oil on board  
 9 x 14⅞ in. (22.9 x 36.5 cm.)  
 Painted in 1932.  
 \$20,000-30,000



**53**  
**MAX WEBER** (1881-1961)  
*The Lake*  
 signed 'Max Weber' (lower right)  
 oil on canvasboard  
 10¾ x 13¼ in. (27.3 x 33.7 cm.)  
 Painted circa 1911.  
 \$7,000-10,000



PROPERTY FROM THE A.C. MILLER COLLECTION

**54**  
**HENRY FITCH TAYLOR** (1853-1925)  
*Landscape*  
 oil on canvas  
 51 x 61½ in. (129.5 x 156.2 cm.)  
 \$15,000-25,000



**51**  
**JOHN SLOAN** (1871-1951)  
*Fall, Santa Fe, River*  
 signed '-John Sloan-' (lower right)—signed again, dated 'Oct. 1943' and inscribed 'Santa Fe' (on the reverse)  
 oil and tempera on panel  
 21⅞ x 15 in. (53.7 x 38.1 cm.)  
 Painted in 1943.  
 \$12,000-18,000



**52**  
**GEORGE WESLEY BELLOWES** (1882-1925)  
*Mountain Farm*  
 signed 'Geo Bellows' and inscribed with title (on the reverse)  
 oil on board  
 20 x 24 in. (50.8 x 61 cm.)  
 Painted in 1922.  
 \$60,000-80,000



THE COLLECTION OF LOIS AND PHILIP MACHT

**•55**  
**CHARLES EPHRAIM BURCHFIELD** (1893-1967)  
*Ruin*  
 watercolor and pencil on paper  
 8¾ x 11⅞ in. (22.2 x 29.5 cm.)  
 \$6,000-8,000



**56**  
**CHARLES EPHRAIM BURCHFIELD** (1893-1967)  
*Snow on the Roof Tops, Salem*  
 signed and dated 'Chas. Burchfield/1920' (lower right)  
 gouache and watercolor on paper  
 16 x 12¾ in. (40.6 x 32.4 cm.)  
 Executed in 1920.  
 \$15,000-25,000





**57**  
**EDWARD HOPPER (1882-1967)**  
*Houses*  
 conte crayon on paper  
 10 $\frac{3}{8}$  x 15 $\frac{7}{8}$  in. (26.4 x 40.3 cm.)  
 Executed circa 1941.  
 \$40,000-60,000



PROPERTY FROM A DISTINGUISHED PRIVATE COLLECTION

**58**  
**CHARLES EPHRAIM BURCHFIELD (1893-1967)**  
*Cliff Dwellers*  
 bears artist's estate stamp 'C.E. Burchfield Foundation\*' and 'B-440' (lower right)  
 mixed media on joined paper laid down on board  
 39 x 54 in. (99.1 x 137.2 cm.)  
 Executed in 1919-20.  
 \$60,000-80,000



**61**  
**MILTON AVERY (1885-1965)**  
*Burned Hill by the Sea*  
 signed 'Milton/Avery' (lower right)  
 watercolor and pencil on paper  
 22 $\frac{1}{2}$  x 30 $\frac{3}{4}$  in. (57.2 x 78.1 cm.)  
 Executed in 1936.  
 \$40,000-60,000



**62**  
**MILTON AVERY (1885-1965)**  
*Hoisting Sail*  
 signed and dated 'Milton Avery 1957' (lower right)  
 mixed media on paper  
 26 $\frac{1}{2}$  x 20 in. (67.3 x 50.8 cm.)  
 Executed in 1957.  
 \$20,000-30,000



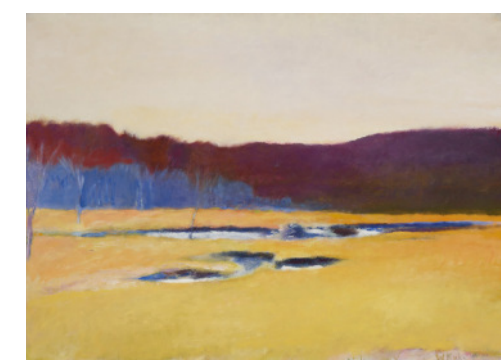
**59**  
**MILTON AVERY (1885-1965)**  
*Bullrushes*  
 signed and dated '1955/Milton Avery' (lower right)  
 monotype in watercolor on tissue paper  
 15 x 24 in. (38.1 x 61 cm.)  
 Executed in 1955.  
 \$4,000-6,000



**60**  
**MILTON AVERY (1885-1965)**  
*Tree Fantasy*  
 signed and dated 'Milton Avery 1958' (lower right)  
 watercolor on paper  
 22 x 30 $\frac{1}{4}$  in. (55.9 x 76.8 cm.)  
 Executed in 1958.  
 \$20,000-30,000

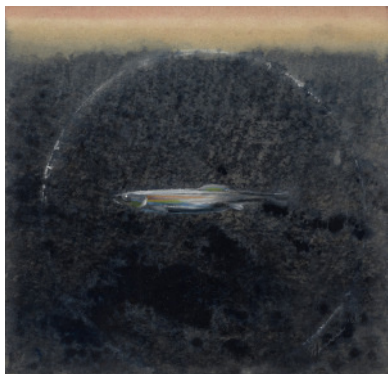


**63**  
**MILTON AVERY (1885-1965)**  
*Pink Island, White Waves*  
 signed and dated '1959 Milton Avery' (lower left)  
 oil on canvasboard  
 18 x 24 in. (45.7 x 61 cm.)  
 Painted in 1959.  
 \$80,000-120,000



**64**  
**WOLF KAHN (1927-2020)**  
*Beaver Swamp*  
 signed 'W Kahn' (lower right)—inscribed with title (on the stretcher)—numbered '4' and dated '1974' (on the reverse)  
 oil on canvas  
 42 x 60 in. (106.7 x 152.4 cm.)  
 Painted in 1974.  
 \$50,000-70,000

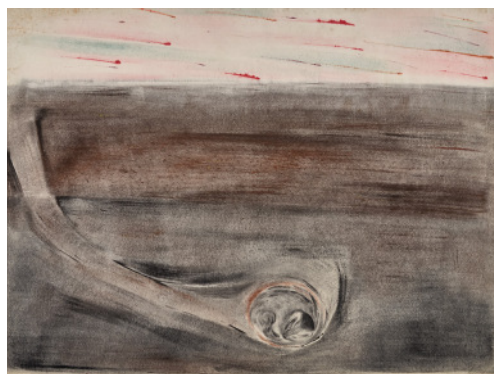




PROPERTY FROM THE ESTATE OF SYLVIA PAINE CONSTABLE

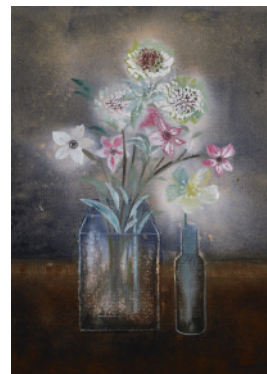
**65**  
**MORRIS COLE GRAVES (1910-2001)**  
*Minnow*

signed and dated 'Graves '67' (lower right)  
mixed media on paper  
6½ x 6½ in. (15.6 x 16.2 cm.)  
Executed in 1967.  
\$10,000-15,000



**66**  
**MORRIS COLE GRAVES (1910-2001)**  
*Hibernation*

signed and dated 'Graves 54' (lower right)  
mixed media on paper  
26 x 35 in. (66 x 88.9 cm.)  
Executed in 1954.  
\$20,000-25,000



**69**  
**MORRIS COLE GRAVES (1910-2001)**  
*Winter Flowers*

signed and dated 'Graves '76' (lower right)—signed and dated again and inscribed with title (on the reverse)  
mixed media on paper  
13¾ x 9¾ in. (34 x 25.1 cm.)  
Executed in 1976.  
\$10,000-15,000



THE COLLECTION OF LOIS AND PHILIP MACHT

**70**  
**MORRIS COLE GRAVES (1910-2001)**  
*Feather*

inscribed with title (on the overlap)  
mixed media on tissue paper laid down on canvas  
52 x 26 in. (132.1 x 66 cm.)  
Executed circa 1950.  
\$8,000-12,000



PROPERTY FROM THE ESTATE OF SYLVIA PAINE CONSTABLE

**67**  
**MORRIS COLE GRAVES (1910-2001)**  
*Spring Bouquet (Ajuga & Scilla)*

signed and dated 'Graves '77' (lower right)—inscribed with title (lower left)—signed, dated and inscribed with title again (on the reverse)  
mixed media on paper laid down on paper  
18½ x 14½ in. (46 x 37.1 cm.)  
Executed in 1977.  
\$12,000-18,000



PROPERTY FROM THE ESTATE OF SYLVIA PAINE CONSTABLE

**68**  
**MORRIS COLE GRAVES (1910-2001)**  
*Poverty Winter Bouquet*

signed and dated 'Graves '76' (lower right)—signed and dated again and inscribed with title (on the reverse)  
mixed media on paper  
16¾ x 12¾ in. (42.5 x 32.4 cm.)  
Executed in 1976.  
\$12,000-18,000



**71**  
**JOSEPH STELLA (1877-1946)**  
*Study for 'Song of the Birds'*

signed twice 'Joseph Stella' (lower center)  
silverpoint and colored pencil on paper  
27½ x 21¾ in. (69.9 x 55.6 cm.)  
Executed circa 1924.  
\$12,000-18,000



**72**  
**CHARLES DEMUTH (1883-1935)**  
*Zinnias*

watercolor and pencil on paper  
8½ x 10¾ in. (21.6 x 27.6 cm.)  
Executed circa 1915.  
\$20,000-30,000





**73**  
**PATRICK HENRY BRUCE** (1881-1936)  
*Flowers*  
 oil on canvas  
 12¾ x 16 in. (32.4 x 40.6 cm.)  
 Painted *circa* 1909.  
 \$12,000-18,000



**74**  
**HUGH HENRY BRECKENRIDGE** (1870-1937)  
*Window Bouquet*  
 signed 'Hugh H. Breckenridge' (lower right)  
 oil on canvas  
 25½ x 31½ in. (63.8 x 79.1 cm.)  
 Painted *circa* 1925.  
 \$20,000-30,000



**77**  
**LUIGI LUCIONI** (1900-1988)  
*Variations in Yellow and Gray*  
 signed and dated 'L. Lucioni 1979' (lower left)  
 oil on canvas  
 22 x 26 in. (55.9 x 66 cm.)  
 Painted in 1979.  
 \$10,000-15,000



**78**  
**ELIE NADELMAN** (1882-1946)  
*Duck*  
 inscribed 'ELI NADELMAN' (along the base)  
 white marble  
 11 in. (27.9 cm.) high  
 Carved *circa* 1920s.  
 \$100,000-150,000



PROPERTY FROM A DISTINGUISHED PRIVATE COLLECTION

**•75**  
**ALFRED HENRY MAURER** (1868-1932)  
*Vase of Flowers*  
 signed 'A.H. Maurer' (upper left)  
 oil on gessoed board  
 21¼ x 18 in. (54 x 45.7 cm.)  
 Painted *circa* 1923-27.  
 \$7,000-10,000



**•76**  
**BROR JULIUS OLSSON NORDFELDT** (1878-1955)  
*Amaryllis*  
 signed 'Nordfeldt' (lower right)—inscribed with title and dated '1934' (on the stretcher)  
 oil on canvas  
 38 x 28 in. (96.5 x 71.1 cm.)  
 Painted in 1934.  
 \$8,000-12,000

**79**  
**BORIS LOVET-LORSKI** (1894-1973)  
*Diana*  
 inscribed 'Boris Lovet-Lorski/1926' and 'GRANDHOMME-ANDRO. Fondateur. Paris' (on the base)  
 bronze with brown patina  
 26 in. (66 cm.) high  
 Cast *circa* 1926-29.  
 \$50,000-70,000



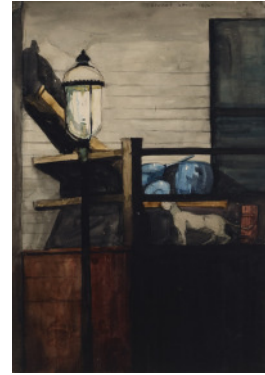




**80**  
**ANDREW WYETH (1917-2009)**  
*Study for 'Heat Lightning'*  
 signed 'A. Wyeth' and inscribed with title (lower left)  
 pencil on paper  
 24 x 17 $\frac{7}{8}$  in. (61 x 45.4 cm.)  
 Executed in 1977.  
 \$12,000-18,000



**81**  
**ANDREW WYETH (1917-2009)**  
*Portrait of Anthony*  
 signed 'A. Wyeth' (center)  
 watercolor and pencil on paper  
 14 x 20 in. (35.6 x 50.8 cm.)  
 Executed in 2004.  
 \$12,000-18,000



PROPERTY FROM A PENNSYLVANIA ESTATE  
**84**  
**STUART DAVIS (1892-1964)**  
*Street Light and Loading Platform*  
 signed and dated 'Stuart Davis-1912-' (upper right)  
 watercolor and pencil on paper  
 15 x 10 $\frac{5}{8}$  in. (38.1 x 27 cm.)  
 Executed in 1912.  
 \$25,000-35,000



PROPERTY FROM A PENNSYLVANIA ESTATE  
**85**  
**STUART DAVIS (1892-1964)**  
*Woman at Table with Scissors*  
 signed and dated 'Stuart Davis-1912-' (lower right)  
 watercolor and pencil on paper  
 15 x 10 $\frac{1}{2}$  in. (38.1 x 26.7 cm.)  
 Executed in 1912.  
 \$25,000-35,000



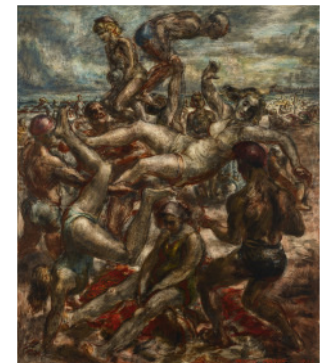
**82**  
**ANDREW WYETH (1917-2009)**  
*Stair Door*  
 signed 'Andrew Wyeth' (upper right)  
 watercolor and gouache on paper laid down on board  
 28 x 20 in. (71.1 x 50.8 cm.)  
 Executed in 1955.  
 \$60,000-80,000



**83**  
**HOWARD COOK (1901-1980)**  
*New York Skyscrapers*  
 signed and dated 'Howard/Cook/1929' (lower center)  
 ink and pencil on paper  
 14 $\frac{3}{4}$  x 10 in. (37.5 x 25.4 cm.)  
 Executed in 1929.  
 \$3,000-5,000



THE COLLECTION OF LOIS AND PHILIP MACHT  
**86**  
**REGINALD MARSH (1898-1954)**  
*Bathers in Surf: A Double-Sided Work*  
 ink and wash on paper  
 22 $\frac{7}{8}$  x 30 $\frac{1}{2}$  in. (56.2 x 77.5 cm.)  
 Executed circa 1954.  
 \$5,000-7,000



**87**  
**REGINALD MARSH (1898-1954)**  
*Coney Island Beach, No. 3*  
 signed 'Reginald Marsh 1938' (lower right)  
 tempera on masonite  
 36 x 30 in. (91.4 x 76.2 cm.)  
 Painted in 1938.  
 \$50,000-70,000

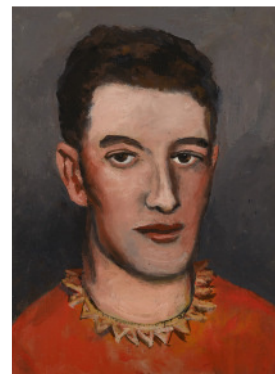




**88**  
**THERESA FERBER BERNSTEIN (1890-2002)**  
*The Metropolitan Opera*  
signed 'TBernstein.' (upper right)  
oil on canvas  
50 x 40 in. (127 x 101.6 cm.)  
Painted circa 1923-24.  
\$30,000-50,000

**89**  
**GUY PÈNE DU BOIS (1884-1958)**  
*Conversation Piece*  
signed and dated 'Guy Pène du Bois 36' (lower right)  
oil on canvas  
40 x 30 in. (101.6 x 76.2 cm.)  
Painted in 1936.  
\$30,000-50,000

**90**  
**JOHN KOCH (1909-1978)**  
*Pink Poinsettia*  
signed and dated 'Koch '70' (lower right)  
oil on canvas  
20 x 16 in. (50.8 x 40.6 cm.)  
Painted in 1970.  
\$30,000-50,000



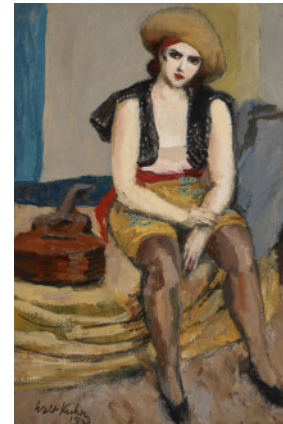
PROPERTY FROM A DISTINGUISHED PRIVATE COLLECTION

**•91**  
**WALT KUHN (1877-1949)**  
*Circus Performer*  
oil on canvas laid down on board  
12½ x 9½ in. (31.8 x 24.1 cm.)  
Painted circa 1932.  
\$7,000-10,000



PROPERTY FROM A DISTINGUISHED PRIVATE COLLECTION

**•92**  
**WALT KUHN (1877-1949)**  
*White Faced Clown with Full Head of Hair*  
oil on canvas laid down on board  
8⅞ x 7⅞ in. (22.5 x 18.1 cm.)  
Painted circa 1935.  
\$7,000-10,000



PROPERTY FROM A DISTINGUISHED PRIVATE COLLECTION

**93**  
**WALT KUHN (1877-1949)**  
*Woman with Guitar*  
signed and dated 'Walt Kuhn/1930' (lower left)  
oil on canvas  
29 x 20 in. (73.7 x 50.8 cm.)  
Painted in 1930.  
\$12,000-18,000



PROPERTY FROM A DISTINGUISHED PRIVATE COLLECTION

**•94**  
**PHILIP HOWARD EVERGOOD (1901-1973)**  
*The Quarantined Citadel*  
signed 'Philip Evergood' (lower right)  
oil on canvas  
48 x 39¼ in. (121.9 x 99.7 cm.)  
Painted in 1945.  
\$8,000-12,000





PROPERTY FROM A NEW ENGLAND COLLECTION

**95**

**MAX WEBER (1881-1961)**  
*Wonderment*

signed 'Max Weber' (lower right)  
pastel, charcoal and pencil on paper  
12½ x 7⅞ in. (31.8 x 20 cm.)  
Executed circa 1952.  
\$3,000-5,000



PROPERTY FROM A DISTINGUISHED PRIVATE COLLECTION

**96**

**BYRON BROWNE (1907-1961)**  
*Woman on the Beach*

signed and dated 'Byron Browne 1945' (lower left)  
oil on canvas  
36 x 47 in. (91.4 x 119.4 cm.)  
Painted in 1945.  
\$7,000-10,000



PROPERTY OF AN IMPORTANT PRIVATE AMERICAN COLLECTOR

**99**

**JOHN FERREN (1905-1970)**  
*Abstract #5*

signed and dated 'Ferren/1937' and inscribed with title  
(on a piece of the original stretcher)  
oil on canvas  
29 x 36 in. (73.7 x 91.4 cm.)  
Painted in 1937.  
\$8,000-12,000

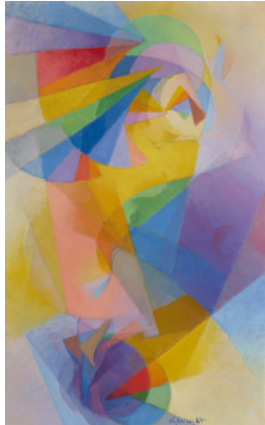


PROPERTY OF AN IMPORTANT PRIVATE AMERICAN COLLECTOR

**100**

**ROLPH SCARLETT (1889-1984)**  
*White Triangle*

signed 'Scarlett.' (lower right)  
oil on canvas  
52¼ x 52¼ in. (132.7 x 132.7 cm.)  
\$7,000-10,000



**97**

**STANTON MACDONALD-WRIGHT (1890-1973)**  
*Flying Figure No. 2*

signed 'S. Wright' (lower right)—signed again, dated '1958' and  
inscribed with title (on the reverse)  
oil on canvas  
40 x 25⅞ in. (101.6 x 63.8 cm.)  
Painted in 1958.  
\$60,000-80,000



**98**

**AUGUSTUS VINCENT TACK (1870-1949)**  
*Ad Astra*

signed 'Augustus Vincent Tack' (lower right)  
oil and silver leaf on canvas laid down on board  
69 x 42¾ in. (175.3 x 108.6 cm.)  
\$30,000-50,000

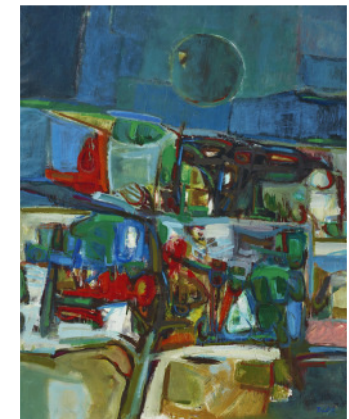


PROPERTY OF AN IMPORTANT PRIVATE AMERICAN COLLECTOR

**101**

**ROLPH SCARLETT (1889-1984)**  
*Untitled*

signed 'Scarlett.' (lower left)  
oil on canvas  
43⅞ x 43 in. (109.5 x 109.2 cm.)  
\$7,000-10,000



THE COLLECTION OF LOIS AND PHILIP MACHT

**102**

**DAVID DRISKELL (1931-2020)**  
*During Eclipse*

signed 'Driskell' (lower right)  
oil on canvas  
50 x 39¾ in. (127 x 101 cm.)  
Painted in 1964.  
\$10,000-15,000





PROPERTY FROM AN IMPORTANT PRIVATE COLLECTION

°103

LEROY NEIMAN (1921-2012)

*Jockey*

signed and dated 'LeRoy Neiman/'62' (lower left)

oil on canvas

18 x 14 $\frac{7}{8}$  in. (45.7 x 37.8 cm.)

Painted in 1962.

\$5,000-7,000



PROPERTY FROM AN IMPORTANT PRIVATE COLLECTION

°104

LEROY NEIMAN (1921-2012)

*Council of War*

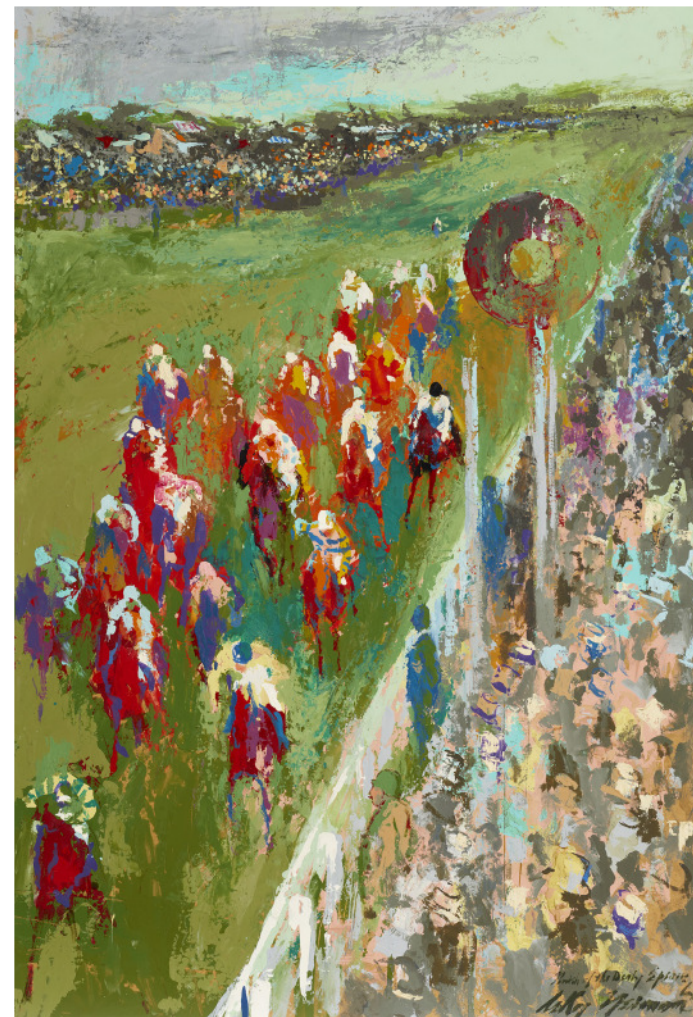
signed and dated 'LeRoy Neiman/'62' (lower right)

oil on masonite

48 x 28 $\frac{1}{2}$  in. (121.9 x 72.4 cm.)

Painted in 1962.

\$10,000-15,000



PROPERTY FROM AN IMPORTANT PRIVATE COLLECTION

°105

LEROY NEIMAN (1921-2012)

*Finish of the Derby Epsom*

signed and dated '62/LeRoy Neiman' and inscribed with title  
(lower right)

oil on masonite

29 $\frac{1}{2}$  x 19 $\frac{7}{8}$  in. (74.9 x 50.5 cm.)

Painted in 1962.

\$7,000-10,000



# CONDITIONS OF SALE • BUYING AT CHRISTIE’S

## CONDITIONS OF SALE

These Conditions of Sale and the Important Notices and Explanation of Cataloguing Practice set out the terms on which we offer the **lots** listed in this catalogue for sale. By registering to bid and/or by bidding at auction you agree to these terms, so you should read them carefully before doing so. You will find a glossary at the end explaining the meaning of the words and expressions coloured in bold. As well as these Conditions of Sale, **lots** in which we offer **Non-Fungible Tokens** are governed by the Additional Conditions of Sale – Non-Fungible Tokens, which are available in Appendix A herein. For the sale of **Non-Fungible Tokens**, to the extent there is a conflict between the “New York Conditions of Sale Buying at Christie’s” and “Additional Conditions of Sale – Non-Fungible Tokens”, the latter controls.

Unless we own a **lot** in whole or in part (Δ symbol), Christie’s acts as agent for the seller.

## BEFORE THE SALE DESCRIPTION OF LOTS

Certain words used in the **catalogue description** have special meanings. You can find details of these on the page headed “Important Notices and Explanation of Cataloguing Practice” which forms part of these terms. You can find a key to the Symbols found next to certain catalogue entries under the section of the catalogue called “Symbols Used in this Catalogue”.

Our description of any **lot** in the catalogue, any **condition** report and any other statement made by us (whether orally or in writing) about any **lot**, including about its nature or **condition**, artist, period, materials, approximate dimensions, or **provenance** are our opinion and not to be relied upon as a statement of fact. We do not carry out in-depth research of the sort carried out by professional historians and scholars. All dimensions and weights are approximate only.

## OUR RESPONSIBILITY FOR OUR DESCRIPTION OF LOTS

We do not provide any guarantee in relation to the nature of a **lot** apart from our **authenticity warranty** contained in paragraph E2 and to the extent provided in paragraph I below.

## CONDITION

The **condition** of **lots** sold in our auctions can vary widely due to factors such as age, previous damage, restoration, repair and wear and tear. Their nature means that they will rarely be in perfect **condition**. **lots** are sold “as is”, in the **condition** they are in at the time of the sale, without any representation or **warranty** or assumption of liability of any kind as to **condition** by Christie’s or by the seller.

Any reference to **condition** in a catalogue entry or in a **condition** report will not amount to a full description of **condition**, and images may not show a **lot** clearly. Colours and shades may look different in print or on screen to how they look on physical inspection. **Condition** reports may be available to help you evaluate the **condition** of a **lot**. **Condition** reports are provided free of charge as a convenience to our buyers and are for guidance only. They offer our opinion but they may not refer to all faults, inherent defects, restoration, alteration or adaptation because our staff are not professional restorers or conservators. For that reason **condition** reports are not an alternative to examining a **lot** in person or seeking your own professional advice. It is your responsibility to ensure that you have requested, received and considered any **condition** report.

## VIEWING LOTS PRE-AUCTION

If you are planning to bid on a **lot**, you should inspect it personally or through a knowledgeable representative before you make a bid to make sure that you accept the description and its **condition**. We recommend you get your own advice from a restorer or other professional adviser.

Pre-auction viewings are open to the public free of charge. Our specialists may be available to answer questions at pre-auction viewings or by appointment.

## ESTIMATES

**Estimates** are based on the **condition**, rarity, quality and **provenance** of the **lots** and on prices recently paid at auction for similar property. **Estimates** can change. Neither you, nor anyone else, may rely on any **estimates** as a prediction or guarantee of the actual selling price of a **lot** or its value for any other purpose. **Estimates** do not include the **buyer’s premium** or any applicable taxes.

## WITHDRAWAL

Christie’s may, at its option, withdraw any **lot** from auction at any time prior to or during the sale of the **lot**. Christie’s has no liability to you for any decision to withdraw.

## JEWELLERY

Coloured gemstones (such as rubies, sapphires and emeralds) may have been treated to improve their look, through methods such as heating and oiling. These methods are accepted by the international jewellery trade but may make the gemstone less strong and/or require special care over time.

It will not be apparent to us whether a diamond is naturally or synthetically formed unless it has been tested by a gemmological laboratory. Where the diamond has been tested, a gemmological report will be available.

- (c) All types of gemstones may have been improved by some method. You may request a gemmological report for any item which does not have a report if the request is made to us at least three weeks before the date of the auction and you pay the fee for the report.

Certain weights in the **catalogue description** are provided for guidance purposes only as they have been **estimated** through measurement and, as such, should not be relied upon as exact.

- (e) We do not obtain a gemmological report for every gemstone sold in our auctions. Where we do get gemmological reports from internationally accepted gemmological laboratories, such reports will be described in the catalogue. Reports from American gemmological laboratories will describe any improvement or treatment to the gemstone. Reports from European gemmological laboratories will describe any improvement or treatment only if we request that they do so, but will confirm when no improvement or treatment has been made. Because of differences in approach and technology, laboratories may not agree whether a particular gemstone has been treated, the amount of treatment, or whether treatment is permanent. The gemmological laboratories will only report on the improvements or treatments known to the laboratories at the date of the report. We do not guarantee nor are we responsible for any report or certificate from a gemmological laboratory that may accompany a **lot**.

For jewellery sales, **estimates** are based on the information in any gemmological report, or if no report is available, assume that the gemstones may have been treated or enhanced.

## WATCHES & CLOCKS

Almost all clocks and watches are repaired in their lifetime and may include parts which are not original. We do not give a **warranty** that any individual component part of any watch is **authentic**. Watchbands described as “associated” are not part of the original watch and may not be **authentic**. Clocks may be sold without pendulums, weights or keys.

As collectors’ watches often have very fine and complex mechanisms, you are responsible for any general service, change of battery, or further repair work that may be necessary. We do not give a **warranty** that any watch is in good working order. Certificates are not available unless described in the catalogue.

Most wristwatches have been opened to find out the type and quality of movement. For that reason, wristwatches with water resistant cases may not be waterproof and we recommend you have them checked by a competent watchmaker before use.

Important information about the sale, transport and shipping of watches and watchbands can be found in paragraph H2(f).

## REGISTERING TO BID NEW BIDDERS

If this is your first time bidding at Christie’s or you are a returning bidder who has not bought anything from any of our salerooms within the last two years you must register at least 48 hours before an auction begins to give us enough time to process and approve your registration. We may, at our option, decline to permit you to register as a bidder. You will be asked for the following:

- for individuals: Photo identification (driver’s licence, national identity card, or passport) and, if not shown on the ID document, proof of your current address (for example, a current utility bill or bank statement);  
for corporate clients: Your Certificate of Incorporation or equivalent document(s) showing your name and registered address together with documentary proof of directors and beneficial owners; and  
for trusts, partnerships, offshore companies and other business structures, please contact us in advance to discuss our requirements.

We may also ask you to give us a financial reference and/or a deposit as a condition of allowing you to bid. For help, please contact our Client Services Department at +1 212-636-2000.

## RETURNING BIDDERS

As described in paragraph B(f) above, we may at our option ask you for current identification, a financial reference, or a deposit as a condition of allowing you to bid. If you have not bought anything from any of our salerooms within the last two years or if you want to spend more than on previous occasions, please contact our Client Services Department at +1 212-636-2000.

## IF YOU FAIL TO PROVIDE THE RIGHT DOCUMENTS

If in our opinion you do not satisfy our bidder identification and registration procedures including, but not limited to completing any anti-money laundering and/or anti-terrorism financing checks we may require to our satisfaction, we may refuse to register you to bid, and if you make a successful bid, we may cancel the contract for sale between you and the seller.

## BIDDING ON BEHALF OF ANOTHER PERSON

If you are bidding on behalf of another person, that person will need to complete the registration requirements above before you can bid, and supply a signed letter authorising you to bid for him/her. A bidder accepts personal liability to pay the **purchase price** and all other sums due unless it has been agreed in writing with Christie’s, before commencement of the auction, that the bidder is acting as an agent on behalf of a named third party acceptable to Christie’s and that Christie’s will only seek payment from the named third party.

## BIDDING IN PERSON

If you wish to bid in the saleroom you must register for a numbered bidding paddle at least 30 minutes before the auction. You may register online at [www.christies.com](http://www.christies.com) or in person. For help, please contact the Client Service Department on +1 212-636-2000.

## BIDDING SERVICES

The bidding services described below are a free service offered as a convenience to our clients and Christie’s is not responsible for any error (human or otherwise), omission, or breakdown in providing these services.

- (a) Phone Bids  
Your request for this service must be made no later than 24 hours prior to the auction. We will accept bids by telephone for **lots** only if our staff are available to take the bids. If you need to bid in a language other than in English, you must arrange this well before the auction. We may record telephone bids. By bidding on the telephone, you are agreeing to us recording your conversations. You also agree that your telephone bids are governed by these Conditions of Sale.
- (b) Internet Bids on Christie’s LIVE™  
For certain auctions we will accept bids over the Internet. For more information, please visit <https://www.christies.com/buying-services/buying-guide/register-and-bid/>. As well as these Conditions of Sale, internet bids are governed by the Christie’s LIVE™ Terms of Use which are available at <https://www.christies.com/LiveBidding/OnlineTermsOfUse.aspx>.

- (c) Written Bids  
You can find a Written Bid Form at any Christie’s office, or by choosing the sale and viewing the **lots** online at [www.christies.com](http://www.christies.com). We must receive your completed Written Bid at least 24 hours before the auction. Bids must be placed in the currency of the saleroom. The **auctioneer** will take reasonable steps to carry out written bids at the lowest possible price, taking into account the **reserve**. If you make a written bid on a **lot** which does not have a **reserve** and there is no higher bid than yours, we will bid on your behalf at around 50% of the low **estimate** or, if lower, the amount of your bid. If we receive written bids on a **lot** for identical amounts, and at the auction these are the highest bids on the **lot**, we will sell the **lot** to the bidder whose written bid we received first.

## CONDUCTING THE SALE WHO CAN ENTER THE AUCTION

We may, at our option, refuse admission to our premises or decline to permit participation in any auction or to reject any bid.

## RESERVES

Unless otherwise indicated, all **lots** are subject to a **reserve**. We identify **lots** that are offered without a **reserve** with the symbol ♦ next to the **lot** number. The **reserve** cannot be more than the **lot**’s low **estimate**, unless the **lot** is subject to a third party guarantee and the irrevocable bid exceeds the printed low **estimate**. In that case, the **reserve** will be set at the amount of the irrevocable bid. **Lots** which are subject to a third party guarantee arrangement are identified in the catalogue with the symbol ♦.

## 5 • AUCTIONEER’S DISCRETION

The **auctioneer** can at his or her sole option:  
refuse any bid;  
move the bidding backwards or forwards in any way he or she may decide, or change the order of the **lots**;  
withdraw any **lot**;  
divide any **lot** or combine any two or more **lots**;  
reopen or continue the bidding even after the hammer has fallen; and

in the case of error or dispute related to bidding and whether during or after the auction, continue the bidding, determine the successful bidder, cancel the sale of the **lot**, or reoffer and resell any **lot**. If you believe that the **auctioneer** has accepted the successful bid in error, you must provide a written notice detailing your claim within 3 business days of the date of the auction. The **auctioneer** will consider such claim in good faith. If the **auctioneer**, in the exercise of his or her discretion under this paragraph, decides after the auction is complete, to cancel the sale of a **lot**, or reoffer and resell a **lot**, he or she will notify the successful bidder no later than by the end of the 7th calendar day following the date of the auction. The **auctioneer**’s decision in exercise of this discretion is final. This paragraph does not in any way prejudice Christie’s ability to cancel the sale of a **lot** under any other applicable provision of these Conditions of Sale, including the rights of cancellation set forth in sections B(3), E(2)(f), F(4), and J(f).

## BIDDING

The **auctioneer** accepts bids from:  
bidders in the saleroom;  
telephone bidders;  
internet bidders through Christie’s LIVE™ (as shown above in paragraph B6); and  
written bids (also known as absentee bids or commission bids) left with us by a bidder before the auction.

## BIDDING ON BEHALF OF THE SELLER

The **auctioneer** may, at his or her sole option, bid on behalf of the seller up to but not including the amount of the **reserve** either by making consecutive bids or by making bids in response to other bidders. The **auctioneer** will not identify these as bids made on behalf of the seller and will not make any bid on behalf of the seller at or above the **reserve**. If **lots** are offered without **reserve**, the **auctioneer** will generally decide to open the bidding at 50% of the low **estimate** for the **lot**. If no bid is made at that level, the **auctioneer** may decide to go backwards at his or her sole option until a bid is made, and then continue up from that amount. In the event that there are no bids on a **lot**, the **auctioneer** may deem such **lot** unsold.

## BID INCREMENTS

Bidding generally starts below the low **estimate** and increases in steps (bid increments). The **auctioneer** will decide at his or her sole option where the bidding should start and the bid increments.

## CURRENCY CONVERTER

The saleroom video screens (and Christie’s LIVE™) may show bids in some other major currencies as well as US dollars. Any conversion is for guidance only and we cannot be bound by any rate of exchange used. Christie’s is not responsible for any error (human or otherwise), omission or breakdown in providing these services.

## SUCCESSFUL BIDS

Unless the **auctioneer** decides to use his or her discretion as set out in paragraph C3 above, when the **auctioneer**’s hammer strikes, we have accepted the last bid. This means a contract for sale has been formed between the seller and the successful bidder. We will issue an invoice only to the registered bidder who made the successful bid. While we send out invoices by mail and/or email after the auction, we do not accept responsibility for telling you whether or not your bid was successful. If you have bid by written bid, you should contact us by telephone or in person as soon as possible after the auction to get details of the outcome of your bid to avoid having to pay unnecessary storage charges.

## LOCAL BIDDING LAWS

You agree that when bidding in any of our sales that you will strictly comply with all local laws and regulations in force at the time of the sale for the relevant sale site.

## THE BUYER’S PREMIUM AND TAXES THE BUYER’S PREMIUM

In addition to the **hammer price**, the successful bidder agrees to pay to us a **buyer’s premium** on the **hammer price** of each **lot** sold. On all **lots** we charge 26% of the **hammer price** up to and including US\$1,000,000, 21.0% on that part of the **hammer price** over US\$1,000,000 and up to and including US\$6,000,000, and 15.0% of that part of the **hammer price** above US\$6,000,000.

## TAXES

The successful bidder is responsible for any applicable taxes including any sales or use tax or equivalent tax wherever such taxes may arise on the **hammer price**, the **buyer’s premium**, and/or any other charges related to the **lot**.

For **lots** Christie’s ships to or within the United States, a sales or use tax may be due on the **hammer price**, **buyer’s premium**, and/or any other charges related to the **lot**, regardless of the nationality or citizenship of the successful bidder. Christie’s will collect sales tax where legally required. The applicable sales tax rate will be determined based upon the state, county, or locale to which the **lot** will be shipped. Christie’s shall collect New York sales tax at a rate of 8.875% for any **lot** collected from Christie’s in New York.

In accordance with New York law, if Christie’s arranges the shipment of a **lot** out of New York State, New York sales tax does not apply, although sales tax or other applicable taxes for other states may apply. If you hire a shipper (other than a common carrier authorized by Christie’s), to collect the **lot** from a Christie’s New York location, Christie’s must collect New York sales tax on the **lot** at a rate of 8.875% regardless of the ultimate destination of the **lot**.

If Christie’s delivers the **lot** to, or the **lot** is collected by, any framer, restorer or other similar service provider in New York that you have hired, New York law considers the **lot** delivered to the successful bidder in New York and New York sales tax must be imposed regardless of the ultimate destination of the **lot**. In this circumstance, New York sales tax will apply to the **lot** even if Christie’s or a common carrier (authorized by Christie’s that you hire) subsequently delivers the **lot** outside New York.

Successful bidders claiming an exemption from sales tax must provide appropriate documentation to Christie’s prior to the release of the **lot** or within 90 days after the sale, whichever is earlier. For shipments to those states for which Christie’s is not required to collect sales tax, a successful bidder may have a us or similar tax obligation. *It is the successful bidder’s responsibility to pay all taxes due*. Christie’s recommends you consult your own independent tax advisor with any questions.

## WARRANTIES SELLER’S WARRANTIES

For each **lot**, the seller gives a **warranty** that the seller:  
is the owner of the **lot** or a joint owner of the **lot** acting with the permission of the other co-owners or, if the seller is not the owner or a joint owner of the **lot**, has the permission of the owner to sell the **lot**, or the right to do so in law; and  
has the right to transfer ownership of the **lot** to the buyer without any restrictions or claims by anyone else.  
If either of the above warranties are incorrect, the seller shall not have to pay more than the **purchase price** (as defined in paragraph F1(a) below) paid by you to us. The seller will not be responsible to you for any reason for loss of profits or business, expected savings, loss of opportunity or interest, costs, damages, **other damages** or expenses. The seller gives no **warranty** in relation to any **lot** other than as set out above and, as far as the seller is allowed by law, all warranties from the seller to you, and all other obligations upon the seller which may be added to this agreement by law, are excluded.

## OUR AUTHENTICITY WARRANTY

We warrant, subject to the terms below, that the **lots** in our sales are **authentic** (our “**authenticity warranty**”). If, within 5 years of the date of the auction, you give notice to us that your **lot** is not **authentic**, subject to the terms below, we will refund the **purchase price** paid by you. The meaning of **authentic** can be found in the glossary at the end of these Conditions of Sale. The terms of the **authenticity warranty** are as follows:

It will be honored for claims notified within a period of 5 years from the date of the auction. After such time, we will not be obligated to honor the **authenticity warranty**.

It is given only for information shown in **UPPERCASE type** in the first line of the **catalogue description** (the “**Heading**”). It does not apply to any information other than in the **Heading** even if shown in **UPPERCASE type**.

The **authenticity warranty** does not apply to any **Heading** or part of a **Heading** which is **qualified**. **Qualified** means limited by a clarification in a **lot**’s **catalogue description** or by the use in a **Heading** of one of the terms listed in the section titled “**Qualified Headings** on the pages of the catalogue headed “Important Notices and Explanation of Cataloguing Practice”. For example, use of the term “ATTRIBUTED TO...” in a **Heading** means that the **lot** is in Christie’s opinion probably a work by the named artist but no **warranty** is provided that the **lot** is the work of the named artist. Please read the full list of **Qualified Headings** and a **lot**’s full **catalogue description** before bidding.

The **authenticity warranty** applies to the **Heading** as amended by any **Saleroom notice**.

The **authenticity warranty** does not apply where scholarship

has developed since the auction leading to a change in generally accepted opinion. Further, it does not apply if the **Heading** either matched the generally accepted opinion of experts at the date of the auction or drew attention to any conflict of opinion.

The **authenticity warranty** does not apply if the **lot** can only be shown not to be **authentic** by a scientific process which, on the date we published the catalogue, was not available or generally accepted for use, or which was unreasonably expensive or impractical, or which was likely to have damaged the **lot**.

The benefit of the **authenticity warranty** is only available to the original buyer shown on the invoice for the **lot** issued at the time of the sale and only if on the date of the notice of claim, the original buyer is the full owner of the **lot** and the **lot** is free from any claim, interest or restriction by anyone else. The benefit of this **authenticity warranty** may not be transferred to anyone else.

In order to claim under the **authenticity warranty** you must:  
give us written notice of your claim within 5 years of the date of the auction. We may require full details and supporting evidence of any such claim;

at Christie’s option, we may require you to provide the written opinions of two recognised experts in the field of the **lot** mutually agreed by you and us in advance confirming that the **lot** is not **authentic**. If we have any doubts, we **reserve** the right to obtain additional opinions at our expense; and

(iii) return the **lot** at your expense to the saleroom from which you bought it in the **condition** it was in at the time of sale.

You only right under this **authenticity warranty** is to cancel the sale and receive a refund of the **purchase price** paid by you to us. We will not, under any circumstances, be required to pay you more than the **purchase price** nor will we be liable for any loss of profits or business, loss of opportunity or value, expected savings or interest, costs, damages, **other damages** or expenses.

**Books**. Where the **lot** is a book, we give an additional **warranty** for 21 days from the date of the auction that if any **lot** is defective in text or illustration, we will refund your **purchase price**, subject to the following terms:

- (a) This additional **warranty** does not apply to:  
the absence of blanks, half titles, tissue guards or advertisements, damage in respect of bindings, stains, spotting, marginal tears or other defects not affecting completeness of the text or illustration;  
drawings, autographs, letters or manuscripts, signed photographs, music, atlases, maps or periodicals;  
books not identified by title;  
**lots** sold without a printed **estimate**;  
books which are described in the catalogue as sold not subject to return; or  
defects stated in any **condition** report or announced at the time of sale.

(b) To make a claim under this paragraph you must give written details of the defect and return the **lot** to the saleroom at which you bought it in the same **condition** as at the time of sale, within 21 days of the date of the sale.

## South East Asian Modern and Contemporary Art and Chinese Calligraphy and Painting.

In these categories, the **authenticity warranty** does not apply because current scholarship does not permit the making of definitive statements. Christie’s does, however, agree to cancel a sale in either of these two categories of art where it has been proven the **lot** is a forgery. Christie’s will refund to the original buyer the **purchase price** in accordance with the terms of Christie’s **Authenticity warranty**, provided that the original buyer notifies us with full supporting evidence documenting the forgery claim within twelve (12) months of the date of the auction. Such evidence must be satisfactory to us that the property is a forgery in accordance with paragraph E2(h)(ii) above and the property must be returned to us in accordance with E2(h)(iii) above. Paragraphs E2(b), (c), (d), (e), (f) and (g) and (i) also apply to a claim under these categories.

**Chinese, Japanese and Korean artefacts (excluding Chinese, Japanese and Korean calligraphy, paintings, prints, drawings and jewellery).**

In these categories, paragraph E2 (b) – (e) above shall be amended so that where no maker or artist is identified, the **authenticity warranty** is given not only for the **Heading** but also for information regarding date or period shown in **UPPERCASE type** in the second line of the **catalogue description** (the “**Subheading**”). Accordingly, all references to the **Heading** in paragraph E2 (b) – (e) above shall be read as references to both the **Heading** and the **Subheading**.

## NO IMPLIED WARRANTIES

**EXCEPT AS SET FORTH IN PARAGRAPHS E1 AND E2 ABOVE, NEITHER THE SELLER NOR THE CHRISTIE’S GROUP MAKE**



**ANY OTHER WARRANTY, EXPRESS OR IMPLIED, ORAL OR WRITTEN, WITH RESPECT TO THE LOT, INCLUDING THE IMPLIED WARRANTIES OF MERCHANTABILITY OR FITNESS FOR A PARTICULAR PURPOSE, EACH OF WHICH IS SPECIFICALLY DISCLAIMED.**

### YOUR WARRANTIES

Your warrant that the funds used for settlement are not connected with any criminal activity, including tax evasion, and you are neither under investigation, nor have you been charged with or convicted of money laundering, terrorist activities or other crimes.

Where you are bidding on behalf of another person, your warrant that:

you have conducted appropriate customer due diligence on the ultimate buyer(s) of the **lot**(s) in accordance with all applicable anti-money laundering and sanctions laws, consent to us relying on this due diligence, and you will retain for a period of not less than 5 years the documentation evidencing the due diligence. You will make such documentation promptly available for immediate inspection by an independent third-party auditor upon our written request to do so;

the arrangements between you and the ultimate buyer(s) in relation to the **lot** or otherwise do not, in whole or in part, facilitate tax crimes;

you do not know, and have no reason to suspect, that the funds used for settlement are connected with, the proceeds of any criminal activity, including tax evasion, or that the ultimate buyer(s) are under investigation, or have been charged with or convicted of money laundering, terrorist activities or other crimes.

### PAYMENT

#### HOW TO PAY

Immediately following the auction, you must pay the **purchase price** being:

- the **hammer price**; and
- the **buyer's premium**; and
- any applicable duties, goods, sales, use, compensating or service tax, or VAT.

Payment is due no later than by the end of the 7th calendar day following the date of the auction (the "**due date**").

We will only accept payment from the registered bidder. Once issued, we cannot change the buyer's name on an invoice or re-issue the invoice in a different name. You must pay immediately even if you want to export the **lot** and you need an export licence.

You must pay for **lots** bought at Christie's in the United States in the currency stated on the invoice in one of the following ways:

#### Wire transfer

JP Morgan Chase Bank, N.A.,  
270 Park Avenue, New York, NY 10017;  
ABA# 021000021; FBO: Christie's Inc.;  
Account # 957-107978,  
for international transfers, SWIFT: CHASUS33.

#### Credit Card

We accept Visa, MasterCard, American Express and China Union Pay. Credit card payments at the New York premises will only be accepted for New York sales. Christie's will not accept credit card payments for purchases in any other sale site.

#### Cash

We accept cash payments (including money orders and traveller's checks) subject to a maximum global aggregate of US\$7,500 per buyer.

#### Bank Checks

You must make these payable to Christie's Inc. and there may be **conditions**. Once we have deposited your check, property cannot be released until five business days have passed.

#### Checks

You must make checks payable to Christie's Inc. and they must be drawn from US dollar accounts from a US bank.

#### Cryptocurrency

With the exception of clients resident in Mainland China, payment for a **lot** marked with the symbol **✦** may be made in a cryptocurrency or cryptocurrencies of our choosing. Such cryptocurrency payments must be made in accordance with the Additional Conditions of Sale - Nonfungible Tokens set out at Appendix A to these Conditions of Sale.

You must quote the sale number, your invoice number and client number when making a payment. All payments sent by post must be

Christie's Inc. Post-Sale Services,  
20 Rockefeller Center, New York, NY 10020.  
For more information please contact our Post-Sale Services by

phone at +1 212 636 2650 or fax at +1 212 636 4939 or email [PostSaleUS@christies.com](mailto:PostSaleUS@christies.com).

### TRANSFERRING OWNERSHIP TO YOU

You will not own the **lot** and ownership of the **lot** will not pass to you until we have received full and clear payment of the **purchase price**, even in circumstances where we have released the **lot** to you.

### TRANSFERRING RISK TO YOU

The risk in and responsibility for the **lot** will transfer to you from whichever is the earlier of the following:

When you collect the **lot**; or

At the end of the 30th day following the date of the auction or, if earlier, the date the **lot** is taken into care by a third party warehouse as set out on the page headed 'Storage and Collection', unless we have agreed otherwise with you.

### WHAT HAPPENS IF YOU DO NOT PAY

If you fail to pay us the **purchase price** in full by the **due date**, we will be entitled to do one or more of the following (as well as enforce our rights under paragraph F5 and any other rights or remedies we have by law):

we can charge interest from the **due date** at a rate of up to 1.34% per month on the unpaid amount due; we can cancel the sale of the **lot**. If we do this, we may sell the **lot** again, publicly or privately on such terms we shall think necessary or appropriate, in which case you must pay us any shortfall between the **purchase price** and the proceeds from the resale. You must also pay all costs, expenses, losses, damages and legal fees we have to pay or may suffer and any shortfall in the seller's commission on the resale;

we can pay the seller an amount up to the net proceeds payable in respect of the amount bid by your default in which case you acknowledge and understand that Christie's will have all of the rights of the seller to pursue you for such amounts;

we can hold you legally responsible for the **purchase price** and may begin legal proceedings to recover it together with our losses, interest, legal fees and costs as far as we are allowed by law;

we can take what you owe us from any amounts which we or any company in the **Christie's Group** may owe you (including any deposit or other part-payment which you have paid to us);

we can, at our option, reveal your identity and contact details to the seller;

we can reject at any future auction any bids made by or on behalf of the buyer or to obtain a deposit from the buyer before accepting any bids;

we can exercise all the rights and remedies of a person holding security over any property in our possession owned by you, whether by way of pledge, security interest or in any other way as permitted by the law of the place where such property is located. You will be deemed to have granted such security to us and we may retain such property as collateral security for your obligations to us; and

we can take any other action we see necessary or appropriate.

If you owe money to us or to another **Christie's Group** company, we can use any amount you do pay, including any deposit or other part-payment you have made to us, or which we owe you, to pay off any amount you owe to us or another **Christie's Group** company for any transaction.

### KEEPING YOUR PROPERTY

If you owe money to us or to another **Christie's Group** company, as well as the rights set out in F4 above, we can use or deal with any of your property we hold or which is held by another **Christie's Group** company in any way we are allowed to by law. We will only release your property to you after you pay us or the relevant **Christie's Group** company in full for what you owe. However, if we choose, we can also sell your property in any way we think appropriate. We will use the proceeds of the sale against any amounts you owe us and we will pay any amount left from that sale to you. If there is a shortfall, you must pay us any difference between the amount we have received from the sale and the amount you owe us.

### COLLECTION AND STORAGE

You must collect purchased **lots** within seven days from the auction (**but note that lots will not be released to you until you have made full and clear payment of all amounts due to us**).

Information on collecting **lots** is set out on the storage and collection page and on an information sheet which you can get from the bidder registration staff or Christie's Post-Sale Services Department on +1 212 636 2650.

If you do not collect any **lot** within thirty days following the auction we may, at our option

charge you storage costs at the rates set out at [www.christies.com/storage](http://www.christies.com/storage).

move the **lot** to another Christie's location or an affiliate or third party warehouse and charge you transport costs and administration fees for doing so and you will be subject to the third party storage warehouse's standard terms and to pay for their standard fees and costs.

sell the **lot** in any commercially reasonable way we think appropriate.

The Storage conditions which can be found at [www.christies.com/storage](http://www.christies.com/storage) will apply.

In accordance with New York law, if you have paid for the **lot** in full but you do not collect the **lot** within 180 calendar days of payment, we may charge you New York sales tax for the **lot**.

Nothing in this paragraph is intended to limit our rights under paragraph F4.

### TRANSPORT AND SHIPPING SHIPPING

We would be happy to assist in making shipping arrangements where possible. You must make all transport and shipping arrangements. However, we can arrange to pack, transport, and ship your property if you ask us to and pay the costs of doing so. We recommend that you ask us for an **estimate**, especially for any large items or items of high value that need professional packing. We may also suggest other handlers, packers, transporters, or experts if you ask us to do so. For more information, please contact Christie's Post-Sale Services at +1 212 636 2650. See the information set out at <https://www.christies.com/buying-services/buying-guide/ship/> or contact us at [PostSaleUS@christies.com](mailto:PostSaleUS@christies.com). We will take reasonable care when we are handling, packing, transporting, and shipping. However, if we recommend another company for any of these purposes, we are not responsible for their acts, failure to act, or neglect.

### EXPORT AND IMPORT

Any **lot** sold at auction may be affected by laws on exports from the country in which it is sold and the import restrictions of other countries. Many countries require a declaration of export for property leaving the country and/or an import declaration on entry of property into the country. Local laws may prevent you from importing a **lot** or may prevent you selling a **lot** in the country you import it into.

You alone are responsible for getting advice about and meeting the requirements of any laws or regulations which apply to exporting or importing any **lot** prior to bidding. If you are refused a licence or there is a delay in getting one, you must still pay us in full for the **lot**. We may be able to help you apply for the appropriate licences if you ask us to and pay our fee for doing so. However, we cannot guarantee that you will get one. For more information, please contact Christie's Post-Sale Services Department at +1 212 636 2650 and [PostSaleUS@christies.com](mailto:PostSaleUS@christies.com). See the information set out at <https://www.christies.com/buying-services/buying-guide/ship/> or contact us at [PostSaleUS@christies.com](mailto:PostSaleUS@christies.com).

You alone are responsible for any applicable taxes, tariffs or other government-imposed charges relating to the export or import of the **lot**. If Christie's exports or imports the **lot** on your behalf, and if Christie's pays these applicable taxes, tariffs or other government-imposed charges, you agree to refund that amount to Christie's.

#### Endangered and protected species

**Lots** made of or including (regardless of the percentage)

endangered and other protected species of wildlife are marked with the symbol **~** in the catalogue. This material includes, among other things, ivory, tortoiseshell, whalebone, certain species of coral, Brazilian rosewood, crocodile, alligator and ostrich skins. You should check the relevant customs laws and regulations before bidding on any **lot** containing wildlife material if you plan to export the **lot** from the country in which the **lot** is sold and import it into another country as a licence may be required. In some cases, the **lot** can only be shipped with an independent scientific confirmation of species and/or age and you will need to obtain these at your own cost. Several countries have imposed restrictions on dealing in elephant ivory, ranging from a total ban on importing African elephant ivory in the United States to importing, exporting and selling under strict measures in other countries. Handbags containing endangered or protected species material are marked with the symbol **≅** and further information can be found in paragraph H2(h) below. We will not be obliged to cancel your purchase and refund the **purchase price** if your **lot** may not be exported, imported or it is seized for any reason by a government authority. It is your responsibility to determine and satisfy the requirements of any applicable laws or regulations relating to the export or import of property containing such protected or regulated material.

**Lots containing Ivory or materials resembling ivory**

If a **lot** contains elephant ivory, or any other wildlife material that could be confused with elephant ivory (for example, mammoth ivory, walrus ivory, helmeted hornbill ivory) you may be prevented from exporting the **lot** from the US or shipping it between US States without first confirming its species by way of a rigorous scientific test acceptable to the applicable Fish and Wildlife authorities. You will buy that **lot** at your own risk and be responsible for any scientific test or other reports required for export from the USA or between US States at your own cost. We will not be obliged to cancel your purchase and refund the **purchase price** if your **lot** may not be exported, imported or shipped between US States, or it is seized for any reason by a government authority. It is your responsibility to determine and satisfy the requirements of any applicable laws or regulations relating to interstate shipping, export or import of property containing such protected or regulated material.

#### Lots of Iranian origin

Some countries prohibit or restrict the purchase, export and/or import of Iranian-origin "works of conventional craftsmanship" (works that are not by a recognized artist and/ or that have a function, (for example: carpets, bowls, ewers, tiles, ornamental boxes). For example, the USA prohibits the import and export of this type of property without a license issued by the US Department of the Treasury, Office of Foreign Assets Control. Other countries, such as Canada, only permit the import of this property in certain circumstances. As a convenience to buyers, Christie's indicates under the title of a **lot** if the **lot** originates from Iran (Persia). It is your responsibility to ensure you do not bid on or import a **lot** in contravention of the sanctions or trade embargoes that apply to you.

#### Gold

Gold of less than 18ct does not qualify in all countries as 'gold' and may be refused import into those countries as 'gold'.

#### Watches

Many of the watches offered for sale in this catalogue are pictured with straps made of endangered or protected animal materials such as alligator or crocodile. These **lots** are marked with the symbol **⚡** in the catalogue. These endangered species straps are shown for display purposes only and are not for sale. Christie's will remove and retain the strap prior to shipment from the sale site. At some sale sites, Christie's may, at its discretion, make the displayed endangered species strap available to the buyer of the **lot** free of charge if collected in person from the sale site within 1 year of the date of the auction. Please check with the department for details on a particular **lot**.

#### Handbags

A **lot** marked with the symbol **≅** next to the **lot** number includes endangered or protected species material and is subject to CITES regulations. This **lot** may only be shipped to an address within the country of the sale site or personally picked up from our saleroom. Please note, Christie's cannot facilitate the shipment of any **lot** containing python, alligator or crocodile into the State of California.

The term "hardware" refers to the metallic parts of the handbag, such as the buckle hardware, base studs, lock and keys and/or strap, which are plated with a coloured finish (e.g. gold, silver, palladium). The terms "Gold Hardware", "Silver Hardware", "Palladium Hardware", etc. refer to the tone or colour of the hardware and not the actual material used. If the handbag incorporates solid metal hardware, this will be referenced in the **catalogue description**.

For all symbols and other markings referred to in paragraph H2, please note that **lots** are marked as a convenience to you, but we do not accept liability for errors or for failing to mark **lots**.

### OUR LIABILITY TO YOU

We give no **warranty** in relation to any statement made, or information given, by us or our representatives or employees, about any **lot** other than as set out in the **authenticity warranty** and, as far as we are allowed by law, all warranties and other terms which may be added to this agreement by law are excluded. The seller's warranties contained in paragraph E1 are their own and we do not have any liability to you in relation to those warranties.

(i) We are not responsible to you for any reason (whether for breaking this agreement or any other matter relating to your purchase of, or bid for, any **lot**) other than in the event of fraud or fraudulent misrepresentation by us or other than as expressly set out in these conditions of sale; and (ii) we do not give any representation, **warranty** or guarantee or assume any liability of any kind in respect of any **lot** with regard to merchantability, fitness for a particular purpose, description, size, quality, **condition**, attribution, **authenticity**, rarity, importance, medium, **provenance**, exhibition history, literature, or historical relevance. Except as required by local law, any **warranty** of any kind is excluded by this paragraph.

In particular, please be aware that our written and telephone bidding services, Christie's LIVE™, **condition** reports, currency converter and saleroom video screens are free services and we are not responsible to you for any error (human or otherwise), omission or breakdown in these services.

We have no responsibility to any person other than a buyer in connection with the purchase of any **lot**.

If, in spite of the terms in paragraphs (a) to (d) or E2(i) above, we are found to be liable to you for any reason, we shall not have to pay more than the **purchase price** paid by you to us. We will not be responsible to you for any reason for loss of profits or business, loss of opportunity or value, expected savings or interest, costs, other damages, or expenses.

### OTHER TERMS OUR ABILITY TO CANCEL

In addition to the other rights of cancellation contained in this agreement, we can cancel a sale of a **lot** if: (i) any of your warranties in paragraph E4 are not correct; (ii) we reasonably believe that completing the transaction is, or may be, unlawful; or (iii) we reasonably believe that the sale places us or the seller under any liability to anyone else or may damage our reputation.

### RECORDINGS

We may videotape and record proceedings at any auction. We will keep any personal information confidential, except to the extent disclosure is required by law. However, we may, through this process, use or share these recordings with another **Christie's Group** company and marketing partners to analyse our customers and to help us to tailor our services for buyers. If you do not want to be videotaped, you may make arrangements to make a telephone or written bid or bid on Christie's LIVE™ instead. Unless we agree otherwise in writing, you may not videotape or record proceedings at any auction.

### COPYRIGHT

We own the copyright in all images, illustrations and written material produced by or for us relating to a **lot** (including the contents of our catalogues unless otherwise noted in the catalogue). You cannot use them without our prior written permission. We do not offer any guarantee that you will gain any copyright or other reproduction rights to the **lot**.

### ENFORCING THIS AGREEMENT

If a court finds that any part of this agreement is not valid or is illegal or impossible to enforce, that part of the agreement will be treated as being deleted and the rest of this agreement will not be affected.

### TRANSFERRING YOUR RIGHTS AND RESPONSIBILITIES

You may not grant a security over or transfer your rights or responsibilities under these terms on the contract of sale with the buyer unless we have given our written permission. This agreement will be binding on your successors or estate and anyone who takes over your rights and responsibilities.

### TRANSLATIONS

If we have provided a translation of this agreement, we will use this original version in deciding any issues or disputes which arise under this agreement.

### PERSONAL INFORMATION

We will hold and process your personal information and may pass it to another **Christie's Group** company for use as described in, and in line with, our privacy notice at [www.christies.com/about-us/contact/privacy](http://www.christies.com/about-us/contact/privacy) and if you are a resident of California you can see a copy of our California Consumer Privacy Act statement at <https://www.christies.com/about-us/contact/ccpa>.

### WAIVER

No failure or delay to exercise any right or remedy provided under these Conditions of Sale shall constitute a waiver of that or any other right or remedy, nor shall it prevent or restrict the further exercise of that or any other right or remedy. No single or partial exercise of such right or remedy shall prevent or restrict the further exercise of that or any other right or remedy.

### LAW AND DISPUTES

This agreement, and any non-contractual obligations arising out of or in connection with this agreement, or any other rights you may have relating to the purchase of a **lot** (the "Dispute") will be governed by the laws of New York. Before we or you start any court proceedings (except in the limited circumstances where the dispute, controversy or claim is related to proceedings brought by someone else and this dispute could be joined to those proceedings), we agree we will each try to settle the Dispute by mediation submitted to JAMS, or its successor, for mediation in New York. If the Dispute is not settled by mediation within 60 days from the date when mediation is initiated, then the Dispute shall be submitted to JAMS, or its successor, for final and binding arbitration in accordance with its Comprehensive Arbitration Rules and Procedures or, if the Dispute involves a

non-US party, the JAMS International Arbitration Rules. The seat of the arbitration shall be New York and the arbitration shall be conducted by one arbitrator, who shall be appointed within 30 days after the initiation of the arbitration. The language used in the arbitral proceedings shall be English. The arbitrator shall order the production of documents only upon a showing that such documents are relevant and material to the outcome of the Dispute. The arbitration shall be confidential, except to the extent necessary to enforce a judgment or where disclosure is required by law. The arbitration award shall be final and binding on all parties involved. Judgment upon the award may be entered by any court having jurisdiction thereof or having jurisdiction over the relevant party or its assets. This arbitration and any proceedings conducted hereunder shall be governed by Title 9 (Arbitration) of the United States Code and by the United Nations Convention on the Recognition and Enforcement of Foreign Arbitral Awards of June 10, 1958.

**10 REPORTING ON WWW.CHRISTIES.COM**  
Details of all **lots** sold by us, including **catalogue descriptions** and prices, may be reported on [www.christies.com](http://www.christies.com). Sales totals are **hammer price** plus **buyer's premium** and do not reflect costs, financing fees, or application of buyer's or seller's credits. We regret that we cannot agree to requests to remove these details from [www.christies.com](http://www.christies.com).

### GLOSSARY

**auctioneer**: the individual auctioneer and/or Christie's.

**authentic**: a genuine example, rather than a copy or forgery of:

- (i) the work of a particular artist, author or manufacturer; if the **lot** is described in the **Heading** as the work of that artist, author or manufacturer;
- (ii) a work created within a particular period or culture, if the **lot** is described in the **Heading** as a work created during that period or culture;
- (iii) a work for a particular origin source if the **lot** is described in the **Heading** as being of that origin or source; or
- (iv) in the case of gems, a work which is made of a particular material, if the **lot** is described in the **Heading** as being made of that material.

**authenticity warranty**: the guarantee we give in this agreement that a **lot** is **authentic** as set out in paragraph E2 of this agreement.

**buyer's premium**: the charge the buyer pays us along with the **hammer price**.

**catalogue description**: the description of a **lot** in the catalogue for the auction, as amended by any **saleroom notice**.

**Christie's Group**: Christie's International Plc, its subsidiaries and other companies within its corporate group.

**condition**: the physical condition of a **lot**.

**due date**: has the meaning given to it paragraph F(a).

**estimate**: the price range included in the catalogue or any **saleroom notice** within which we believe a **lot** may sell. Low **estimate** means the lower figure in the range and high **estimate** means the higher figure. The mid **estimate** is the midpoint between the two.

**hammer price**: the amount of the highest bid the **auctioneer** accepts for the sale of a **lot**.

**Heading**: has the meaning given to it in paragraph E2.

**lot**: an item to be offered at auction (or two or more items to be offered at auction as a group).

**other damages**: any special, consequential, incidental or indirect damages of any kind or any damages which fall within the meaning of 'special', 'incidental' or 'consequential' under local law.

**purchase price**: has the meaning given to it in paragraph F(a).

**provenance**: the ownership history of a **lot**.

**qualified**: has the meaning given to it in paragraph E2 and **Qualified Headings** means the paragraph headed **Qualified Headings** on the page of the catalogue headed 'Important Notices and Explanation of Cataloguing Practice'.

**reserve**: the confidential amount below which we will not sell a **lot**.

**saleroom notice**: a written notice posted next to the **lot** in the saleroom and on [www.christies.com](http://www.christies.com), which is also read to prospective telephone bidders and notified to clients who have left commission bids, or an announcement made by the **auctioneer** either at the beginning of the sale, or before a particular **lot** is auctioned.

**subheading**: has the meaning given to it in paragraph E2.

**UPPER CASE type**: means having all capital letters.

**warranty**: a statement or representation in which the person making it guarantees that the facts set out in it are correct.



# IMPORTANT NOTICES AND EXPLANATION OF CATALOGUING PRACTICE

## IMPORTANT NOTICES

### A Property in which Christie's has an ownership or financial interest

From time to time, Christie's may offer a **lot** in which Christie's has an ownership interest or a financial interest. Such **lot** is identified in the catalogue with the symbol **Δ** next to its **lot** number. Where Christie's has an ownership or financial interest in every **lot** in the catalogue, Christie's will not designate each **lot** with a symbol, but will state its interest in the front of the catalogue.

### ◊ Minimum Price Guarantees

On occasion, Christie's has a direct financial interest in the outcome of the sale of certain **lots** consigned for sale. This will usually be where it has guaranteed to the Seller that whatever the outcome of the auction, the Seller will receive a minimum sale price for the **lot**. This is known as a minimum price guarantee. Where Christie's holds such financial interest we identify such **lots** with the symbol **◊** next to the **lot** number.

### ◊ • Third Party Guarantees /Irrevocable bids

Where Christie's has provided a Minimum Price Guarantee, it is at risk of making a loss, which can be significant if the **lot** fails to sell. Christie's sometimes chooses to share that risk with a third party who agrees prior to the auction to place an irrevocable written bid on the **lot**. If there are no other higher bids, the third party commits to buy the **lot** at the level of their irrevocable written bid. In doing so, the third party takes on all or part of the risk of the **lot** not being sold. **Lots** which are subject to a third party guarantee arrangement are identified in the catalogue with the symbol **◊ •**.

In most cases, Christie's compensates the third party in exchange for accepting this risk. Where the third party is the successful bidder, the third party's remuneration is based on a fixed financing fee. If the third party is not the successful bidder, the remuneration may either be based on a fixed fee or an amount calculated against the final **hammer price**. The third party may continue to bid for the **lot** above the irrevocable written bid.

Third party guarantors are required by us to disclose to anyone they are advising their financial interest in any **lots** they are guaranteeing. However, for the avoidance of any doubt, if you are advised by or bidding through an agent on a **lot** identified as being subject to a third party guarantee you should always ask your agent to confirm whether or not he or she has a financial interest in relation to the **lot**.

### A ♦ Property in which Christie's has an interest and Third Party Guarantee /Irrevocable bid

Where Christie's has a financial interest in a **lot** and the **lot** fails to sell, Christie's is at risk of making a loss. As such, Christie's may choose to share that risk with a third party whereby the third party contractually agrees, prior to the auction, to place an irrevocable written bid on the **lot**. Such **lot** is identified with the symbol **Δ ♦** next to the **lot** number.

Where the third party is the successful bidder on the **lot**, he or she will not receive compensation in exchange for accepting this risk. If the third party is not the successful bidder, Christie's may compensate the third party. The third party is required by us to disclose to anyone he or she is advising of his or her financial interest in any **lot** in which Christie's has a financial interest. If you are advised by or bidding through an agent on a **lot** in which Christie's has a financial interest that is subject to a contractual written bid, you should always ask your agent to confirm whether or not he or she has a financial interest in relation to the **lot**.

### ▣ Bidding by interested parties

When a party with a direct or indirect interest in the **lot** who may have knowledge of the **lot's reserve** or other material information may be bidding on the **lot**, we will mark the **lot** with this symbol **▣**. This interest can include beneficiaries of an estate that consigned the **lot** or a joint owner of a **lot**. Any interested party that successfully bids on a **lot** must comply with Christie's Conditions of Sale, including paying the **lot's full buyer's premium** plus applicable taxes.

### Post catalogue notifications

If Christie's enters into an arrangement or becomes aware of bidding that would have required a catalogue symbol, we will notify you by updating christies.com with the relevant information (time permitting) or otherwise by a pre-sale or pre-**lot** announcement.

## Other Arrangements

Christie's may enter into other arrangements not involving bids. These include arrangements where Christie's has advanced money to consignors or prospective purchasers or where Christie's has shared the risk of a guarantee with a partner without the partner being required to place an irrevocable written bid or otherwise participating in the bidding on the **lot**. Because such arrangements are unrelated to the bidding process they are not marked with a symbol in the catalogue.

## EXPLANATION OF CATALOGUING PRACTICE

Terms used in a catalogue or **lot** description have the meanings ascribed to them below. Please note that all statements in a catalogue or **lot** description as to authorship are made subject to the provisions of the Conditions of Sale, including the **authenticity warranty**. Our use of these expressions does not take account of the **condition** of the **lot** or of the extent of any restoration. Written **condition** reports are usually available on request.

A term and its definition listed under '**Qualified Headings**' is a **qualified** statement as to authorship. While the use of this term is based upon careful study and represents the opinion of specialists, Christie's and the consignor assume no risk, liability and responsibility for the **authenticity** of authorship of any **lot** in this catalogue described by this term, and the **authenticity warranty** shall not be available with respect to **lots** described using this term.

### PICTURES, DRAWINGS, PRINTS AND MINIATURES

Name(s) or Recognised Designation of an artist without any qualification: in Christie's opinion a work by the artist.

### QUALIFIED HEADINGS

"Attributed to ..": in Christie's **qualified** opinion probably a work by the artist in whole or in part.

"Studio of ..."/"Workshop of ...": in Christie's **qualified** opinion a work executed in the studio or workshop of the artist, possibly under his supervision.

"Circle of ...": in Christie's **qualified** opinion a work of the period of the artist and showing his influence.

"Follower of... ": in Christie's **qualified** opinion a work executed in the artist's style but not necessarily by a pupil.

"Manner of... ": in Christie's **qualified** opinion a work executed in the artist's style but of a later date.

"After... ": in Christie's **qualified** opinion a copy (of any date) of a work of the artist.

"Signed ..."/"Dated ..."/"Inscribed ...": in Christie's **qualified** opinion the work has been signed/dated/inscribed by the artist.

"With signature..."/"With date..."/"With inscription...": in Christie's **qualified** opinion the signature/ date/inscription appears to be by a hand other than that of the artist.

The date given for Old Master, Modern and Contemporary Prints is the date (or approximate date when prefixed with "circa") on which the matrix was worked and not necessarily the date when the impression was printed or published.

### CHINESE CERAMICS AND WORKS OF ART

When a piece is, in Christie's opinion, of a certain period, reign or dynasty, its attribution appears in uppercase letters directly below the **Heading** of the description of the **lot**.

e.g. A BLUE AND WHITE BOWL  
18TH CENTURY

If the date, period or reign mark mentioned in uppercase letters after the bold type first line states that the mark is of the period, then in Christie's opinion, the piece is of the date, period or reign of the mark.

e.g. A BLUE AND WHITE BOWL  
KANGXI SIX-CHARACTER MARK IN UNDERGLAZE BLUE AND OF THE PERIOD (1662-1722)

If no date, period or reign mark is mentioned in uppercase letters after the bold description, in Christie's opinion it is of uncertain date or late manufacture.

e.g. A BLUE AND WHITE BOWL

### QUALIFIED HEADINGS

When a piece is, in Christie's opinion, not of the period to which it would normally be attributed on stylistic grounds, this will be incorporated into the first line or the body of the text of the description.

e.g. A BLUE AND WHITE MING-STYLE BOWL; or

The Ming-style bowl is decorated with lotus scrolls...

In Christie's **qualified** opinion this object most probably dates from Kangxi period but there remains the possibility that it may be dated differently.

e.g. KANGXI SIX-CHARACTER MARK IN UNDERGLAZE BLUE AND PROBABLY OF THE PERIOD

In Christie's **qualified** opinion, this object could be dated to the Kangxi period but there is a strong element of doubt.

e.g. KANGXI SIX-CHARACTER MARK IN UNDERGLAZE BLUE AND POSSIBLY OF THE PERIOD

### JEWELLERY

"Boucheron": when maker's name appears in the title, in Christie's opinion it is by that maker.

"Mounted by Boucheron": in Christie's opinion the setting has been created by the jeweller using stones originally supplied by the jeweller's client.

### QUALIFIED HEADINGS

"Attributed to": in Christie's **qualified** opinion is probably a work by the jeweller/maker but no **warranty** is provided that the **lot** is the work of the named jeweller/maker.

Other information included in the catalogue description

"Signed Boucheron / Signature Boucheron": in Christie's **qualified** opinion has a signature by the jeweller.

"With maker's mark for Boucheron": in Christie's **qualified** opinion has a mark denoting the maker.

### Periods

Art Nouveau 1895-1910

Belle Epoque 1895-1914

Art Deco 1915-1935

Retro 1940s

### WATCHES

#### Removal of Watch Batteries

A **lot** marked with the symbol **⌚** next to the **lot** number incorporates batteries which may be designated as "dangerous goods" under international laws and regulations governing the transport of goods by air freight. If a buyer requests shipment of the **lot** to a destination outside of the country in which the saleroom is located, the batteries will be removed and retained by us prior to shipment. If the **lot** is collected from the saleroom, the batteries will be made available for collection free of charge.

### FABERGÉ

#### QUALIFIED HEADINGS

"Marked Fabergé, Workmaster ...": in Christie's **qualified** opinion a work of the master's workshop inscribed with his name or initials and his workmaster's initials.

"By Fabergé...": in Christie's **qualified** opinion, a work of the master's workshop, but without his mark.

"In the style of...": in Christie's **qualified** opinion a work of the period of the master and closely related to his style.

"Bearing marks...": in Christie's **qualified** opinion not a work of the master's workshop and bearing later marks.

### HANDBAGS

#### Condition Reports

The **condition** of **lots** sold in our auctions can vary widely due to factors such as age, previous damage, restoration, repair and wear and tear. **Condition** reports and grades are provided free of charge as a courtesy and convenience to our buyers and are for guidance only. They offer our honest opinion but they may not refer to all faults, restoration, alteration or adaptation. They are not an alternative to examining a **lot** in person or taking your own professional advice. **Lots** are sold "as is," in the **condition** they are in at the time of the sale, without any representation or **warranty** as to **condition** by Christie's or by the seller.

#### Grades in Condition Reports

We provide a general, numeric condition grade to help with overall condition guidance. Please review the specific condition report and extra images for each **lot** before bidding.

Grade 1: this item exhibits no signs of use or wear and could be considered as new. There are no flaws. Original packaging and protective plastic are likely intact as noted in the **lot** description.

Grade 2: this item exhibits minor flaws and could be considered nearly brand new. It may never have been used, or may have been used a few times. There are only minor condition notes, which can be found in the specific condition report.

Grade 3: this item exhibits visible signs of use. Any signs of use or wear are minor. This item is in good condition.

Grade 4: this item exhibits wear from frequent use. This item either has light overall wear or small areas of heavy wear. The item is considered to be in fair condition.

Grade 5: this item exhibits normal wear and tear from regular or heavy use. The item is in good, usable condition but it does have condition notes.

Grade 6: this item is damaged and requires repair. It is considered in fair condition.

Any reference to condition in a catalogue entry will not amount to a full description of condition, and images may not show the condition of a **lot** clearly. Colours and shades may look different in print or on screen to how they look in real life. It is your responsibility to ensure that you have received and considered any condition report and grading.

#### References to "HARDWARE"

Where used in this catalogue the term "hardware" refers to the metallic parts of the bag, such as the buckle hardware, base studs, lock and keys and /or strap, which are plated with a coloured finish (e.g. gold, silver, palladium). The terms "Gold Hardware", "Silver Hardware", "Palladium Hardware" etc. refer to

the tone or colour of the hardware and not the actual material used. If the bag incorporates solid metal hardware this will be referenced in the **lot** description.

#### POST 1950 FURNITURE

All items of post-1950 furniture included in this sale are items either not originally supplied for use in a private home or sold as collector's items. These items may not comply with the provisions of the Furniture and Furnishings (Fire) (Safety) Regulations 1988 (as amended in 1989, 1993 and 2010, the "Regulations"). Accordingly, these items should not be used as furniture in your home in their current **condition**. If you do intend to use such items for this purpose, you must first ensure that they are upholstered, restuffed and/or recovered (as appropriate) in order that they comply with the provisions of the Regulations.

# SYMBOLS USED IN THIS CATALOGUE

The meaning of words coloured in **bold** in this section can be found in paragraph K, Glossary, of the section of the catalogue headed 'Conditions of Sale'. Please note that **lots** are marked as a convenience to you and we shall not be liable for any errors in, or failure to, mark a lot.

◊ Christie's has a direct financial interest in the **lot**. See Important Notices in the Conditions of Sale for further information.

◊♦ Christie's has provided a minimum price guarantee and has a direct financial interest in this **lot**. Christie's has financed all or a part of such interest through a third party. Such third parties generally benefit financially if a guaranteed **lot** is sold. See the Important Notices in the Conditions of Sale for further information.

Δ Christie's has a financial interest in the **lot**. See Important Notices in the Conditions of Sale for further information..

⌚ Christie's has a financial interest in this **lot** and has financed all or a part of such interest through a third party. Such third parties generally benefit financially if a guaranteed **lot** is sold. See the Important Notices in the Conditions of Sale for further information. '

▣ A party with a direct or indirect interest in the **lot** who may have knowledge of the **lot's reserve** or other material information may be bidding on the **lot**.

• **Lot** offered without **reserve**.

~ **Lot** incorporates material from endangered species which could result in export restrictions. See Section H2(c) of the Conditions of Sale for further information.

≈ Handbag **lot** incorporates material from endangered species. International shipping restrictions apply. See paragraph H2 of the Conditions of Sale for further information.

∞ **Lot** incorporates elephant ivory material. See paragraph H2 of the Conditions of Sale for further information.

⚡ **Lot** incorporates material from endangered species which is shown for display purposes only and is not for sale. See Section H2(h) of the Conditions of Sale for further information.

➤ **Lot** is a Non Fungible Token (NFT). Please see Appendix A – Additional Conditions of Sale – Non- Fungible Tokens in the Conditions of Sale for further information.

▶ **Lot** contains both a Non Fungible Token (NFT) and a physical work of art. Please see Appendix A – Additional Conditions of Sale – Non-Fungible Tokens in the Conditions of Sale for further information.

■ See Storage and Collection pages in the catalogue.

❖ With the exception of clients resident in Mainland China, you may elect to make payment of the purchase price for the **lot** via a digital wallet in the name of the registered bidder, which must be maintained with one of the following: Coinbase Custody Trust; Coinbase, Inc.; Fidelity Digital Assets Services, LLC; Gemini Trust Company, LLC; or Paxos Trust Company, LLC. Please see the **lot** notice and Appendix B – Terms for Payment by Buyers in Cryptocurrency in the Conditions of Sale for further requirements and information

⊞ Please note that this **lot** is subject to an import tariff. The amount of the import tariff due is a percentage of the final hammer price plus buyer's premium. The buyer should contact Post Sale Services prior to the sale to determine the estimated amount of this import tariff. If the buyer instructs **Christie's** to arrange shipping of the **lot** to a foreign address, the buyer will not be required to pay an import tariff, but the shipment may be delayed while awaiting approval to export from the local government. If the buyer instructs Christie's to arrange the shipment of the **lot** to a domestic address, if the buyer collects the property in person, or if the buyer arranges their own shipping (whether domestically or internationally), the buyer will be required to pay the import tariff. For the purpose of calculating sales tax, if applicable, the import tariff will be added to the final hammer price plus buyer's premium and sales tax will be collected as per The Buyer's Premium and Taxes section of the Conditions of Sale.



## STORAGE AND COLLECTION

### PAYMENT OF ANY CHARGES DUE

Specified **lots** (sold and unsold) marked with a filled square (■) not collected from Christie's by 5.00pm on the day of the sale will, at our option, be removed to Christie's Fine Art Storage Services (CFASS in Red Hook, Brooklyn). Christie's will inform you if the **lot** has been sent offsite.

If the **lot** is transferred to Christie's Fine Art Storage Services, it will be available for collection after the third business day following the sale.

Please contact Christie's Post-Sale Service 24 hours in advance to book a collection time at Christie's Fine Art Services. All collections from Christie's Fine Art Services will be by pre-booked appointment only.

Please be advised that after 50 days from the auction date property may be moved at Christie's discretion. Please contact Post-Sale Services to confirm the location of your property prior to collection.

Tel: +1 212 636 2650  
Email: PostSaleUS@christies.com

Operation hours for both Christie's Rockefeller and Christie's Fine Art Storage are from 9:30 am to 5:00 pm, Monday – Friday.

### COLLECTION AND CONTACT DETAILS

**Lots** will only be released on payment of all charges due and on production of a Collection Form from Christie's. Charges may be paid in advance or at the time of collection. We may charge fees for storage if your **lot** is not collected within thirty days from the sale. Please see paragraph G of the Conditions of Sale for further detail.

Tel: +1 212 636 2650  
Email: PostSaleUS@christies.com

02/08/19

### SHIPPING AND DELIVERY

Christie's Post-Sale Service can organize domestic deliveries or international freight. Please contact them on +1 212 636 2650 or PostSaleUS@christies.com.

Long-term storage solutions are also available per client request. CFASS is a separate subsidiary of Christie's and clients enjoy complete confidentiality. Please contact CFASS New York for details and rates: +1 212 636 2070 or storage@cfass.com

### CHRISTIE'S ROCKEFELLER CENTER

20 Rockefeller Plaza, New York 10020  
Tel: +1 212 636 2000  
PostSaleUS@christies.com  
Main Entrance on 49th Street  
Receiving/Shipping Entrance on 48th Street

**Hours: 9.30 AM - 5.00 PM**  
**Monday-Friday except Public Holidays**

### CHRISTIE'S FINE ART STORAGE SERVICES (CFASS)

62-100 Imlay Street, Brooklyn, NY 11231  
Tel: +1 212 974 4500  
PostSaleUS@christies.com  
Main Entrance on Corner of Imlay and Bowne St

**Hours: 9.30 AM - 5.00 PM**  
**Monday-Friday except Public Holidays**

## IDENTITY VERIFICATION

From January 2020, new anti-money laundering regulations require Christie's and other art businesses to verify the identity of all clients. To register as a new client, you will need to provide the following documents, or if you are an existing client, you will be prompted to provide any outstanding documents the next time you transact.

### Private individuals:

- A copy of your passport or other government-issued photo ID
- Proof of your residential address (such as a bank statement or utility bill) dated within the last three months

*Please upload your documents through your christies.com account: click 'My Account' followed by 'Complete Profile'. You can also email your documents to info@christies.com or provide them in person.*

### Organisations:

- Formal documents showing the company's incorporation, its registered office and business address, and its officers, members and ultimate beneficial owners
- A passport or other government-issued photo ID for each authorised user

*Please email your documents to info@christies.com or provide them in person.*

# As a leader in the art market,

Christie's is committed to building a **sustainable business model** that promotes and protects the environment. Our digital platform on christies.com offers a conscious approach, creating an immersive space where we bring art to life through high quality images, videos and in-depth essays by our specialists.

With this robust online support, Christie's will print fewer catalogues to ensure that we achieve our goal of **Net Zero by 2030**. However, when we do print, we will uphold the highest sustainable standards.

The catalogue you are reading is:



printed on fully recycled paper;



printed with vegetable-based ink and biodegradable laminates;



printed in close proximity to our markets in an effort to reduce distribution emissions.



Please scan for more information about our sustainability goals and projects.

# CHRISTIE'S



DRIVING AMBITIOUS CORPORATE CLIMATE ACTION

# CHRISTIE'S





CVB



## INDEX

### A

Ard, K. 24  
Avery, M. 13, 14, 15, 16, 59, 60, 61,  
62, 63

### B

Bellows, G.W. 52  
Benton, T.H. 7, 8, 49, 50  
Bernstein, T.F. 88  
Breckenridge, H.H. 74  
Browne, B. 96  
Bruce, P.H. 73  
Burchfield, C.E. 5, 6, 55, 56, 58

### C

Cone, M. 48  
Cook, H. 83  
Cornwell, D. 27  
Cramer, K. 46  
Crawford, R. 41

### D

Davis, S. 84, 85  
Demuth, C. 34, 72  
Dohanos, S. 25  
Drewes, W. 38  
Driskell, D. 102

### E

Evergood, P.H. 94

### F

Ferren, J. 99

### G

Goeller, C. 43, 47  
Graham, J. 42  
Graves, M.C. 65, 66, 67, 68, 69, 70

### H

Hopper, E. 20, 57  
Hughes, G. 23

### K

Kahn, W. 10, 64  
Kent, R. 9  
Koch, J. 90  
Kuhn, W. 91, 92, 93

### L

Lachaise, G. 32  
Lawrence, J. 36  
Lewandowski, E. 44, 45  
Lovet-Lorski, B. 79  
Lucioni, L. 77

### M

MacDonald-Wright, S. 97  
Manship, P.H. 30, 31  
Marin, J. 17, 18, 19  
Marsh, R. 86, 87  
Maurer, A.H. 75  
Morris, G.L.K. 37, 39

### N

Nadelman, E. 78  
Neiman, L. 103, 104, 105  
Nordfeldt, B.J.O. 76

### O

O'Keeffe, G. 4  
O'Keeffe, I.T.E. 1

### P

Parrish, M. 21, 22  
Pene du Bois, G. 89  
Porter, F. 11, 12  
Prendergast, C.E. 33

### R

Rockwell, N. 26

### S

Scarlett, R. 100, 101  
Sheeler, C. 2  
Sloan, J. 51  
Stella, J. 71  
Stettheimer, F. 3, 35  
Storrs, J.H.B. 40

### T

Tack, A.V. 98  
Taylor, H.F. 54

### W

Weber, M. 53, 95  
Wyeth, A. 80, 81, 82  
Wyeth, N.C. 28, 29





# CHRISTIE'S



20 ROCKEFELLER PLAZA NEW YORK NEW YORK 10020